

# RETIREMENT FARM & FEEDLOT EQUIPMENT AUCTION

TUESDAY – FEBRUARY 20, 2018 – 10:00 a.m.  
OVERTON, NEBRASKA

AUCTION SITE: From the Overton I-80 exit 1 1/2 miles South to "T" then 1/2 mile East, then 2 miles South OR from Loomis 11 miles North to Road 746 then 1 mile West  
LIVE ONLINE BIDDING AVAILABLE – Advanced registration required.

## LESTER NELSON & SONS, INC., OWNERS DEAN & ROXINE NELSON

Phone 308-991-0370

[Register For Online Bidding](#)

[Pre-Sale Catalog](#)

### TRACTORS

2011 JD 8285R MFWD tractor, 380/80R-38 front & 480/80R-50 rear tires, w/rear wts., hyd. 3rd length, 4 hyd., quick hitch, 22 front wts., duals, 1,918 hours, & ILS front suspension, power shift

2009 JD 8330 MFWD tractor, 380/85R-34 front & 480/80R-46 rear tires & duals, hyd. 3rd length, 4 hyd., quick hitch, 12 front wts., dual spacers, Starfire ITC, power shift, 2,866 hrs., SN P042093

1988 JD 4850 MFWD tractor, 20.8R-38 tires & duals, 380-35R-30 front tires, hyd. 3rd length, 3 hyd., quick hitch, 20 front weights, SN P013728

1989 JD 4555 tractor, 480/80R-42 tires & duals, hyd. 3rd length, 3 hyd., power shift, quick hitch, 20 front wts., 8,579 hrs.

1992 JD 4255 tractor, 18.4-R-38 tires, hyd. 3rd length, 3 hyd., power shift, quick hitch, 8 front wts., 6,594 hrs., SN 011692

1969 JD 4020 tractor w/cab, 18.4-34 tires, 3 hyd., SN 221048

JD 3010 tractor, syncro-shift, diesel, pre-1969

Farmall Super MTA tractor, wide front, pulley, live pto, live hyd., power steering, 15.5-38 tires, SN 601665

### FEED TRUCK & GRAIN TRUCK



2004 Kenworth T-300, automatic trans., 11R-22.5 tires, 238,487 miles, w/Kuhn Knight Botec 4063 feed box, 4 auger, w/3 auger discharge & Digi-Star scale  
1993 GMC Top Kick truck, automatic trans., 11R-22.5 tires, twin screw, w/Scott 20 ft. steel box & hoist, silage extensions, hyd. end gate & grain doors

### WHEEL LOADERS & SKID STEER



JD 624J wheel loader, w/3 1/2 yard bucket, 7,808 hrs., SN 624J2594804

JD 544E wheel loader, w/2 1/2 yard bucket, 21,708 hrs.

JD 240 series II skid steer loader w/forks, bucket, & angle blade

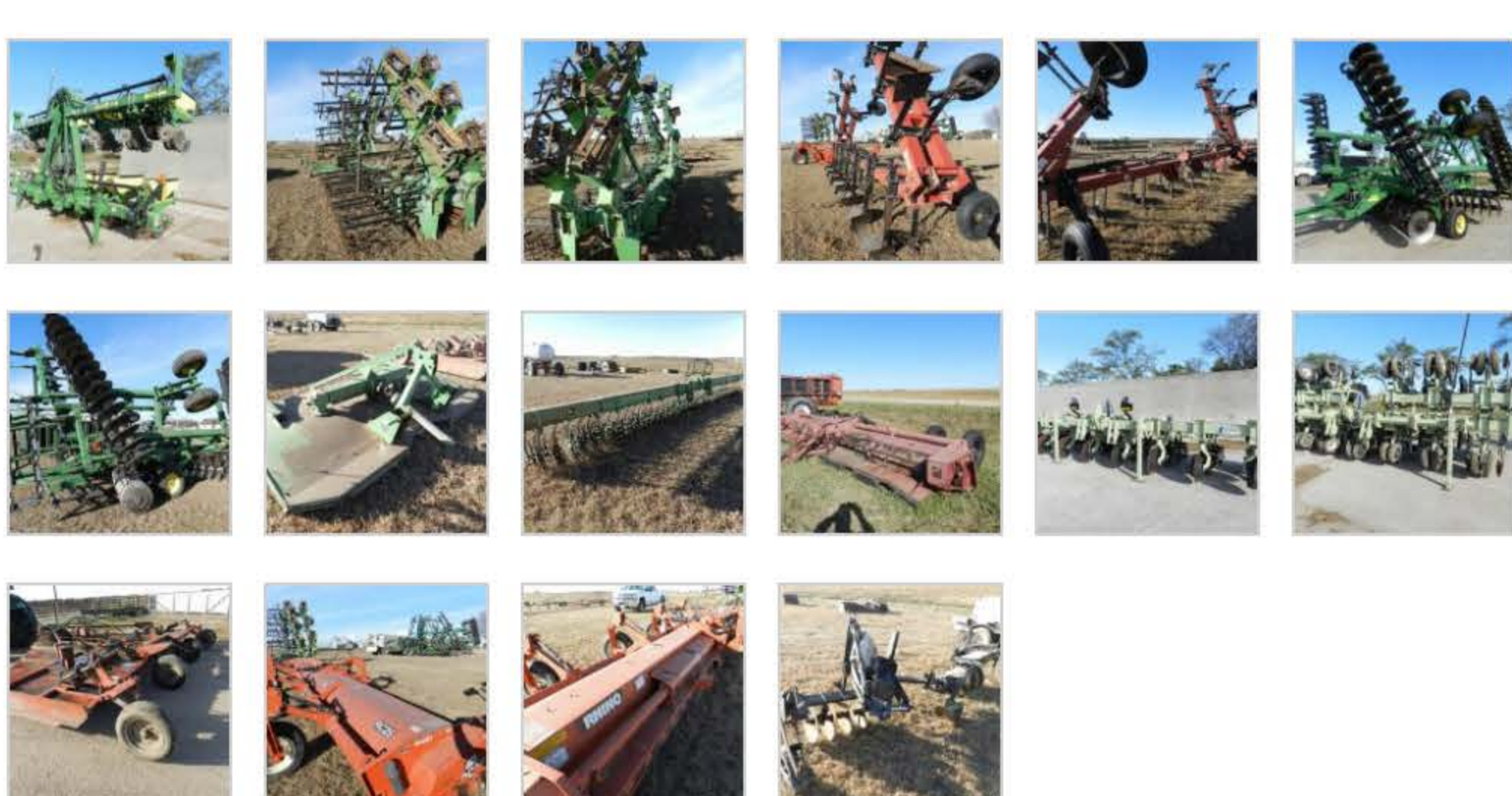
### PADDLE SCRAPERS



JD 862 paddle scraper, SN 00421T

JD 860 paddle scraper, SN 0008637

### MACHINERY



2012 Max-Emerge XP 1720 planter, 12r36", w/corn & bean plates, stacking fold, sharktooth openers, large boxes

1994 Orthman 9300 cultivator, 12r36", folding

Orthman guidance system

JD 637 WheatLand disc, 32 ft. w/9" spacing & lift harrow, SN X004627

1995 York 12r36" hiller, double folding bar, w/rippers & hawks

Bessler rolling stalk cutter, 12r36", folding

Orthman 1 Tripper, 8r36", ridged bar, only 10 acres

1991 Rhino RC25 stalk shredder, 25 ft., 3 pt.

Trac Packer pivot track closer

JD 20 ft. rotary hoe

Field conditioner, 3 pt., 12 ft.

Chisel, 3 pt., 12 ft.

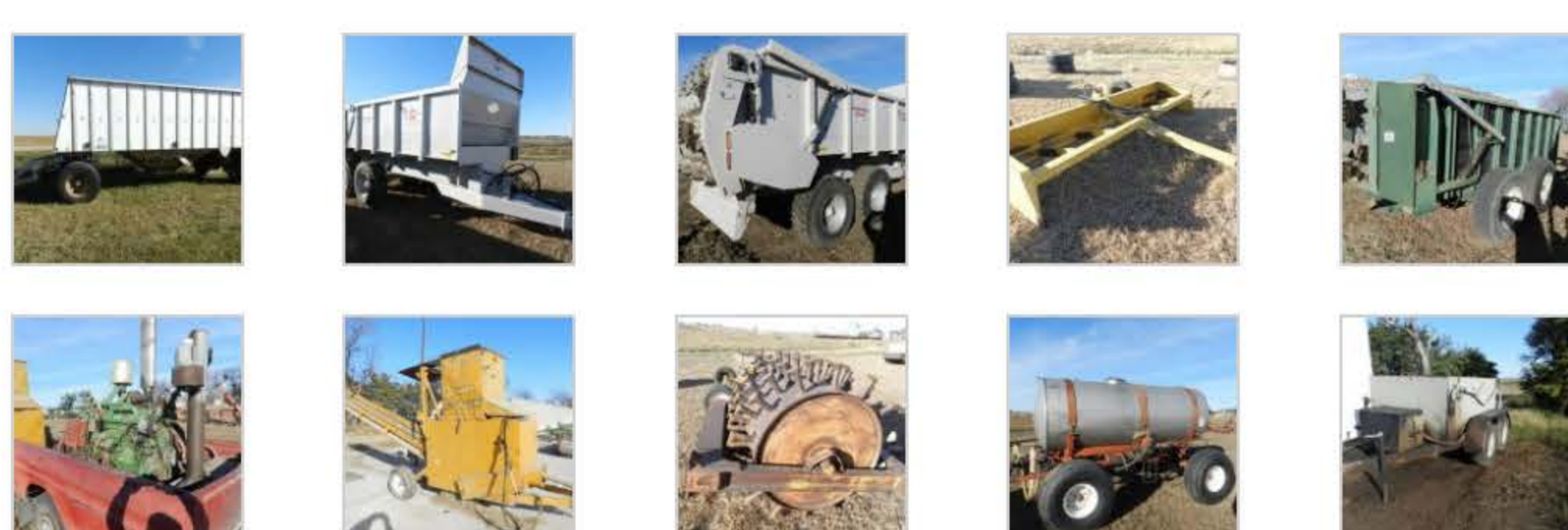
JD MX10 10 ft. shredder, 3 pt.

Rhino 20 ft. bat wing shredder, pull type

MC stalk shredder, 6r36", big 1000 PTO

Hawkins ridger, 6r36"

### EQUIPMENT



Degelman 46/57 14 ft. dozer, fits 8030 series up to all 80R series tractors that are power shift, hyd. angle

Kuhn Knight Prospread PSC 161 manure spreader, double floor chains, large 1000 PTO

Hagedorn 2000 manure spreader, 2 axle, hyd., push type unload, 15 ft.

Byrum box scraper, 12 ft., pull type

Mighty Giant corn grinder w/elevator, large 1000 PTO

JD power unit w/PTO conversion, runs corn grinder, on trailer, SN T06059T346543

JD power unit S4044, SN 546639RG

JD 155 3 pt. blade, hyd., 10 ft.

Box scraper, 12 ft., pull type

Box scraper, 12 ft., 3 pt.

Sheeps Foot roller packer

WW bumper pull stock trailer, 16 ft.

small 2 wheel trailer

Mist blower, 3 pt.

Yamaha 4 wheeler

Honda 4 wheeler

Danuser 3 pt. post hole digger

1980 Merritt single hopper bottom pup trailer, aluminum side, w/bumper hitch

1000 gal. fuel tank & trailer, tandem axle, 2" ball hitch, w/gas motor & pump

1000 gal. fuel tank

1000 gal. stainless steel water tank on 4 wheel trailer

3 pt. bale fork

10 pivot tires & wheels, 16.00R-20

3 pivot tires & wheels 14.9-24

Wide front for Farmall M up to 450 tractors

Wide front for Farmall 560 up to 806 tractors

### VEHICLES



2015 Chevrolet Silverado 1500 pickup, auto trans., 4x4, single cab, 8 ft. box, 37,388 miles

2009 Chevrolet 1500 pickup, auto trans., 4x4, single cab, 8 ft. box, 76,459 miles

### SHOP EQUIPMENT

- 2 – Agheater space heaters
- Miller Bobcat welder & generator on cart
- Miller AC/DC welder
- Portable air compressor
- Kawasaki portable generator
- Accetyline torch & bottles
- Hyd. floor jacks
- Craftsman tool boxes w/tools
- StorSmart tool box & tools
- Several 3 pt. JD 3rd lengths
- Hyd. cylinders
- Battery grease guns
- L head grinders
- Bearing pullers
- 3/4" socket sets
- Air impact wrenches
- Shoves, scoops, pitchforks
- Battery chargers
- Log chains & Tow cables
- Implement tires
- Misc. parts
- Much More

### TERMS

TERMS: Payment in full day of auction by cash or approved check. I.D. required. \$25 title transfer fee applied to titled vehicles. Everything sells "as is" condition – no warranties. Not responsible for accidents.

LUNCH – By Nelson Camp Stove

CONDUCTED BY  
MARSHALL  
LAND BROKERS & AUCTIONEERS  
OF KEARNEY, INC.

308-234-6266  
Robin Marshall Miles Marshall Jeff Marshall  
308-234-1607 308-234-9074 308-233-4633  
Office Ph. 308-234-6266 Fax 308-237-7679

Search our site

Search

