

# MARSHALL'S ABSOLUTE AUCTION

**TUESDAY – AUGUST 18, 2015 –9:00 AM.  
Kearney, Nebraska**

**SALE SITE: Buffalo County Fairgrounds located from Hwy. 30 and Ave. N (Peavey Grain) 3/4 miles north on Ave. N.**

**PLAN TO ATTEND THIS ABSOLUTE AUCTION - EVERYTHING SELLS TO THE HIGHEST BIDDER.  
NO MINIMUMS.**



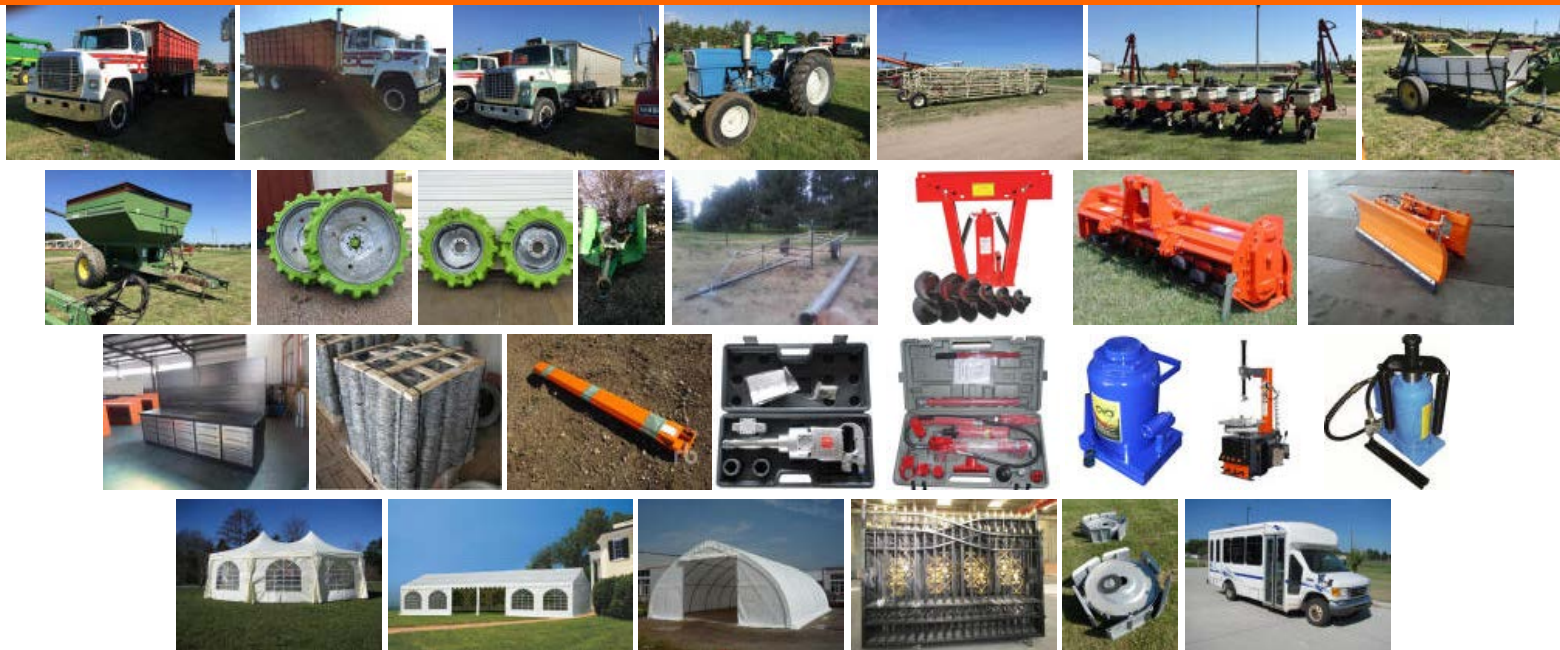
**LIVE ONLINE BIDDING AVAILABLE - Advance registration required.**

**COME PREPARED FOR TWO AUCTION RINGS**

**CHECK IN OF ADDITIONAL ITEMS FOR THE AUGUST 18, 2015 AUCTION IS CLOSED.**

**CALL SOON TO CONSIGN FOR THE MARCH PRE-PLANTING AUCTION..**

## RECENT ADDITIONS



2 - Irrigation pipe trailers

(6) 10x16 in. tires

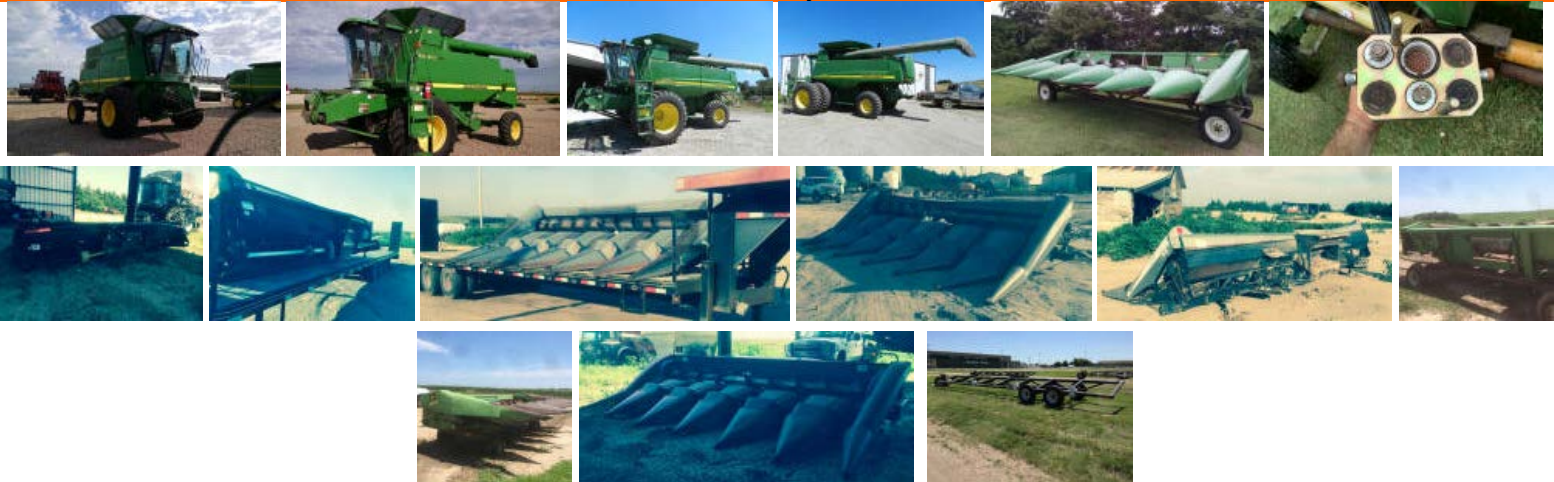
1981 Timppte 40 ft. aluminum double hopper bottom trailer  
 w/new roll over tarp  
 Mauer 25 ft. header trailer  
 Krause 24 ft. tandem disc, hyd. fold w/lift harrow  
 16 fertilizer discs  
 16 hiller units  
 Westendorf WL44 loader, levelmatic, quick-tach w/JD mounts,  
 fits 4020 or 30 & 40 series tractors  
 JD 594 corn head, 5r36" w/poly snoots  
 JD544 corn head, 5r36", all tin snoots  
 JD batwing shredders  
 JD 510 round baler, twine tie, shedded  
 JD 12 forage harvester w/single row head, pickup head,  
 and direct cut head  
 1982 Timppte 42 ft. double hopper bottom grain trailer  
 1976 Chevrolet C65 tandem axle truck, tag axle, 5 & 2 spd. trans.,  
 gas engine & 20 ft. wooden box w/hoist  
 (4) Rhino-gator pivot tires, (2) 11.2-24, (2) 11.2-38 on galvanized  
 rims, near new  
 Titan 20 ft. gooseneck flat bed trailer w/4 ft. beaver tail and ramps,  
 tandem axle  
 Haybuster 2640 bale processor  
 Wilson portable steel corral on wheels  
 Portable loading chute  
 1998 Buck Dandy 16 ft., bumper pull utility trailer  
 TrailEze 32 ft.  
 Case loader Model 70, off 1070 Case, includes all brackets,  
 bucket bale fork, SN 15431  
 TracPacker pivot track closer  
 2006 Ford Cutaway Bus  
 Rhino post hole digger, 3 pt., PTO  
 Pickup box fuel tank, 100 gal. w/12v pump  
 2 - Grain bin fans, 5 & 7 hp, 3 phase w/transitions  
 2 - Grain bin spreaders, high capacity, 3 phase  
 100 steel T posts, 5 1/2 and 6 ft.  
 50 wooden posts 6 1/2 ft. x 4"  
 1975 Chevrolet C60, 2 ton, gas  
 1968 Chevrolet C50, 2 ton, gas  
 Twin axle trailer, steel frame, wood flooring  
 JD platform head, rigid, 30 ft.  
 30 ft. head trailer  
 Bin fan, 10 hp, 3 phase  
 1980 Ford truck, L9000, diesel, 16 ton, twin screw, 22 ft. box,  
 roll over tarp  
 1978 Ford truck, LN800, auto trans., twin screw, gas, 20 ft. box  
 30 ft. X 85 ft. X 15 ft. Peak ceiling double door storage building C/W:  
 commercial fabric, waterproof, UV and fire resistant,  
 12' x 12' drive through doors at two ends, unused  
 (3) 10 ft x 20 ft Commercial Instant Pop Up Tent , unused  
 (2) 16 ft x 22 ft Marquee Event Tent, C/W: 320 sq.ft, one zipper door,  
 7 windows, heavy duty frames and fabrics, unused  
 20 ft x 40 ft Full Closed Party Tent, C/W: 800 sq.ft, doors, windows,

4 1/2 ft. bush hog shredder  
 1000 gal. fuel tank  
 2 - 500 gal. fuel tanks  
 10 bolt duels  
 1000 gal. fertilizer tank  
 Feterl grain auger w/swingout hopper, 120 ft.  
 White 6708 planter, 8r30", 3pt.  
 10 - wire mesh cattle panels  
 Railroad ties  
 Grapple fork loader buckets  
 Barbed wire  
 JD front end  
 Brandt 10" auger, 71 ft., swing hopper  
 2 - Feterl augers, 8 ", 60 ft.  
 Feterl auger, 8", 40 ft.  
 Big Valley M1 Silencer livestock chute, scale needs repair  
 3 pt. hyd. log splitter  
 Westfield MK 100-71 10" auger, 71 ft., rebuilt, swing hopper  
 Manure spreader  
 Springtooth harrow  
 Brent 470 grain cart  
 New JD 60 mower deck  
 2000 gal. fuel tank  
 200 Steel T posts  
 8 - Farmmaster 10 ft. corral panels  
 3 - Farmmaster 12 ft. corral panels  
 2 - Farmmaster 10 ft. corral panels w/4 ft. gate  
 10 ft. gate  
 4 ft. gate w/frame  
 Steel panels & gates  
 JD 12 ft. drill  
 Palpation cage  
 Hawkins unit  
 Guide press wheels  
 Pivot & Tractor tires  
 1986 Fruehauf 28 ft. enclosed trailer, roll up door, alum. roof  
 Stock trailer  
 Kawasaki mule  
 Car trailer  
 Tandem axle bumper pull trailer  
 5 trailer axles  
 18 ft. car trailer  
 2 - New Powermate 3750 watt generators, New  
 Powermate 1500 watt generator, New  
 45 ft. Batco conveyor, 13", electric motor, like new  
 Spray bar, 60'  
 6r36" Hawkins on Orthman bar  
 Demco swing hopper w/motor  
 Gravity box wagon  
 Alley way  
 Squeeze chute  
 1968 Ford 600 Truck

4 side walls included, unused  
 (2) 10 ft. 20 drawer heavy duty work bench w/40" hanging wall, stainless steel drawer panel, metal handles, unused  
 Heavy Duty Tire Changer, 110v 60 hz, unused  
 Heavy Duty Wheel Balancer, 110v 60 hz, unused  
 20 ft. Heavy duty Bi-Parting Wrought Iron driveway gate, unused  
 (2) 94" Hydraulic Skid Steer Loader Dozer Blade/snow pusher, unused  
 1" Dr. Air Impact Wrench Kit, unused  
 20 ton Air Hydraulic Jack, unused  
 50 ton Hydraulic Bottle Jack, unused  
 12 ton pipe bender, unused  
 (2) 10 Ton Hydraulic Porta Power Kit, unused  
 (4) Welding Helmet Solar Power, unused  
 82" Heavy Duty rotary tiller, gear drive, 3 point PTO shaft w/overrunning clutch, unused  
 Heavy Duty Warehouse Steel Shelving Racks, (6) units, 72 ft per skid per lot, unused  
 (2) 72" Forklift fork extension, unused  
 27 rolls Hot Dipped Galvanized barbed wire (820 ft per roll), unused  
 1999 IHC 8100 2 axle tractor, ISM 280 h.p. Cummins, 346,655 miles on ECM/166,050 miles on odometer, 30,825 hrs. on ECM, 10 spd. Fuller trans., Bartlett hydraulic 5th wheel, used as a trailer spotter  
 JD ground driven manure spreader  
 Aeration fan  
 Sweep auger w/electric motor  
 JD 58 loader w/bucket, fits JD 4020  
 500 gal. fuel tank w/pump and meter  
 Small Ford Fiat tractor, wide fit, diesel

2008 Dodge Ram 2500 heavy duty pickup, automatic 5.7 liter hemi, single cab, 8 ft. box  
 JD corn head snoots  
 Titan Challenger 16" stock trailer  
 Corral panels  
 Shop floor scrubber  
 Header trailer for JD flex head  
 Pacific 7500 diesel generator, remote control  
 Pacific heavy duty trash pump  
 625 Bale Carrier, single axle, dolly wheels, new  
 Silage wagon, single axle, dolly wheels, new  
 Tandem Tow ATV/car towing trailer, bumper pull, aluminum  
 headache rack  
 Bear Track aluminum trailer, single axle, 10 ft.  
 Flat bed semi trailer, tandem axle, 44 ft.  
 International 2350 loader  
 Koyker Loader  
 Lion work lizard loader  
 Quarter fender for semi  
 Hobbs 45' trailer  
 Horse hay feeder  
 3 rear tractor tires 13.6-38  
 King cutter 3 pt. blade  
 3 pt. FMC shredder, 5 ft.  
 Farmall M tractor, gas, wide front, power steering w/dual loader, new rear tires  
 Farmall 300 tractor, gas, narrow front w/3 pt. hitch

## COMBINES, HEADS



2006 JD 9660 STS combine, Bullet Rotor, 520/85R38 front tires & duals, 2490 engine hours, 1850 sep. hours, Green Star Ready, yield, moisture & acreage monitor SN H09660S716378, shedded, sharp. For Information call Cory 308-440-8954

1999 JD 9510 combine, 3261 engine & 2364 separator hours. For Information call Richard Carlson, 308-832-1321

JD 7720 Combine, Turbo, 2,800 engine hours

JD 694 corn head, 6r36", single point hookup, poly snoots

JD 694 corn head, 6r36" w/poly snoots, w/Lofquist hyd. driven reel

JD Platform flex head, 18 ft., w/ploy floor, SN 328626H



JD 694 corn head, 6r36" w/hyd. deck plates, single point hookup, ground sensors, SNH00694X675647

JD 644 corn head

JD 918 flex head

AGCO 3000 corn head, 6r36", fits R72, SN 636HP27231

Allis Chalmers 636 corn head, 6r36", fits R72, SN 01210P8585

Allis Chalmers corn head, 6r36", fits N6

JD 654A row crop head, fits R72

30 ft. head trailer, new

35 ft. head trailer, new

40 ft. head trailer, new

JD 644 corn head 6r36"

JD 344 corn head 3r36"

## TRACTORS, LOADERS



1995 JD 8300 tractor, MFWD, 3 hyd., 16 spd P.S., 7200 hrs., 200 hrs. on a complete engine overhaul, good rubber, OWNER Ryan Wells, 308-991-3432

JD 4020 tractor, w/Ansel cab, 2 hyd., 5,300 hrs., w/Farmhand 225 loader w/bucket

IHC 656 tractor, gas, wide front w/dual loader

JD 530 tractor, power steering, 3 pt., narrow front, fenders, all new tires, newer paint, 13.6-36 tires, SN 5305450, nice

JD 4020 tractor, w/Ansel cab, 2 hyd., 5,300 hrs., w/Farmhand 225 loader w/bucket

IHC 1066 tractor w/otter dozer, diesel

Farmall Super M tractor, gas, narrow front, w/Lyon loader w/bale fork & manure bucket

545 Fiat Allis payloader, 2 yd. bucket, 17.5x25 tires, 3rd valve, diesel, nice condition

1942 Farmall M tractor, wide front w/pulley

Farmall M tractor w/loader, grapple fork and wide bucket

## TRUCKS



1999 Freightliner FLD 120 semi, sleeper cab, new paint, Cat C12 engine & 10 speed trans., tandem, twin screw, 30,000 miles on major overhaul

1991 White GMC twin screw semi truck, Cummins, 9 spd., day cab

1979 IHC truck, tandem axle, 18 ft. Midwest box, rollover tarp, gas, 5 sp. trans., hi & lo

1989 Volvo semi truck, tandem twin screw, diesel, 9 sp., Cummins motor, white

1977 IHC Loadstar 1800 truck, gas, 5 & 2 sp. trans., air tag axle w/18 ft. steel box & hoist w/cargo endgate

1973 Chevrolet truck, 4 & 2 spd., 16 ft. box & hoist

2000 Freightliner, FLD 112, Cummins ISM, 350 hp, Meritor RMX10-135A trans., Meritor RT-40-145 rear ends, 4.11 ratio, 515,369 miles

## TRAILERS



- 2006 Wilson Pacesetter double hopper bottom aluminum grain trailer, 50 ft., spread axle, 72" sides, super singles, remote elec. tarp
- 1980 Polar stainless steel tanker trailer, 42 ft., 5,500 gal., SN 4657
- 1989 Wilson Pacesetter aluminum double hopper bottom grain trailer, 2 sp. tarp gears & roll over tarp
- 1983 Timpte 42 ft. hopper bottom grain trailer, aluminum
- 1997 Jet 30 ft. steel hopper bottom grain trailer
- Merritt 43 ft. aluminum double hopper bottom trailer, needs repair
- Wilson aluminum cattle pot, needs repair
- Tandem axle car trailer, bumper pull, 16 ft.
- 1999 Landoll tilt bed car trailer, 16 ft., 7K axles
- Gooseneck tandem axle tilt bed trailer, 30 ft., w/hyd. wench, airover hyd. brakes
- Ditch Witch trailer, bumper pull
- Camarron heavy duty skid steer trailer, 2 axles, bumper pull

## PICKUPS & VEHICLES



- 2004 Chevrolet Cutaway Bus, 206,356 miles, SN1GBJG31U441215968
- 2000 Chevrolet 1500 extended cab pickup, 4x4, automatic, 6 1/2 ft. box, 277,000 miles
- 2005 Chevrolet K1500 Silverado pickup, extended cab, automatic, 4x4, 201,865 miles
- 2000 Chevrolet 2500 w/utility box, boom & vise
- 2000 Chevrolet 3500HD, 4x2, w/utility box, 6.5 L diesel, automatic, 165,529 miles
- 1992 Chevrolet 1500, extended cab, 4x4, auto. trans.
- Pickup flatbed box 8 ft. by 7 ft. w/headache rack
- 1992 Daihatsu mini truck, 4x4, road legal
- 2004 Chevy Cutaway Bus, SN1GBJG31U441215968
- 2001 Ford Windstar cargo van, 196,241 miles
- 2003 Dodge Ram cargo van, 217,262 miles
- 2007 Dodge Caravan passenger van

## MACHINERY



- Hesston 20 ft. field cultivator, pull type, w/harrow

Hesston 20 ft. field cultivator, pull type, w/harrow

White planter, 12r36", AGCO 6122, Orthman markers, set up for starter fert., SN607986

IH 900 planter, 6r36"

Case plow, 6-16

JD corn planter, 2r30" 70 units, 3 pt.

Krause 12 ft. 4 disc, pull type

White 458 chisel, 12 ft., 3 pt., w/sweeps

2 - Ridgers 6r36"

Cultivator 6r36"

Crustbuster drill, 12 ft.

## SKID STEER ATTACHMENTS

All of these items are unused



Lowe Hyd. Auger 750ch w/9 in. & 12 in. w/skid steer quick attach

Lowe Hyd. Auger 750ch w/12 in. w/skid steer quick attach

Stout Brush Grapple 66-9 w/skid steer quick attach

Stout Brush Grapple HD72-8 w/skid steer quick attach

Stout Brush Grapple HD72-4 close-tine w/skid steer quick attach

Stout Brush Grapple XHD84-6 w/skid steer quick attach

Stout Brush Grapple HD72-FB w/skid steer quick attach

Stout Brush Grapple HD72-3 w/skid steer quick attach

Stout Rock Bucket/Brush Grapple Combo HD72-3 open-end w/skid steer quick attach

Stout Stump Grinder SG-13R w/skid steer quick attach

Stout Material Bucket 72 w/skid steer quick attach

Stout Stump Bucket w/skid steer quick attach

Stout Tree & Post puller w/skid steer quick attach

Stout Hitch Receiver plate

Stout Grapple Attachment Add-on

Stout Regular Weld-on skid steer plate

Stout Solid Weld-on skid steer plate

Stout Walk through pallet forks, 48 in. w/skid steer quick attach

Stout Full-Back pallet forks 48 in. w/skid steer quick attach

Pallet Forks 48 in. w/skid steer quick attach

1 set 2-60 in. forks (2 forks sell as one lot)

Stout Bale Spear-round w/skid steer quick attach

4 - Tires, 12-16.5/E Forerunner SKS-1 skid steer tire 12-ply with Rim Guard, super traction, high stability

## EQUIPMENT





Bobcat MT55 walk behind skid steer w/new motor, 3125 hrs.

Muskin M-7000 dirt machine, 7 1/2 yd., SN 16760

JD 5400 self propelled forage harvester, 4 wheel drive, 200 hrs. on engine overhaul and a lot of new work done to cutter

JD 3960 pull type forage harvester

JD 3r36" row crop head

JD 2r36" row crop head

JD pickup head

Rhino 900 9 ft. blade

Bush Hog RTN80 tiller, PTO

JD 5200 self propelled forage harvester

JD 3r36" head

JD 6' pickup head

Silage dump wagon

Caterpillar forklift, T40D, 4000 lbs. cap, 4898 hrs., propane, needs transmission

Low profile 4 wheeler sprayer, hand nozzle & flood

90 gal. sprayer w/hand wand

42 sheets of pro-rib steel, 19'4" long, emerald green color

(2) 24 ft. grain bin floors, new

Rhino 3 pt. blade 8 ft.

Dirt Scoop 8 ft., 3 pt.

(2) Stan-hoist silage wagons, steel box & hoist w/automatic end gate

(2) 300 gal. fuel tanks on stands

(4) 500 gal. fuel tanks

Extension for forklift telehandler

12 ft. box scraper, pull type

Box scraper, 8 ft., 3 pt.

Rotary shredder, 3 pt., PTO, 7 ft.

100 steel fence posts

3 pt. blade

Transfer pump w/gas engine

10 ft. box blade, new

12 ft. box blade, new

10 ft. heavy duty tilt box blade, new

12 ft. heavy duty tilt box blade, new

14 ft. pull type grader, new

2 - Ryan sod cutters, 18" & 12"

Duals 480/80 R42 tires and rims

500 gal. fuel tank on trailer w/12v pump

Bumper for KW T-800 semi

Pallets of lumber

1000 gal. fuel tank

Steel water tank on running gear

2 - 300 gal. fuel tanks on stands

8 - 11.00 - 24.5 truck tires

Ford Shredder, 5 ft., 3 pt., PTO

18.4 - 38 rims & tires

25 pieces of sucker rod

27 ft. folding tool bar

## HAY EQUIPMENT



NH 780 Round Baler, net wrap & twine tie

Ford hay rake, series 503, 3 pt., SN I8343

## GRAIN HANDLING EQUIPMENT



- J&M 875 auger wagon, 18" auger, and rollover tarp
- Brent 650 bushel auger wagon, front unload
- Parker 2600 gravity box wagon, 375 bu.
- Brent 420 auger wagon
- Westfield 10" auger, hyd lift, 70 ft.
- Gravity box wagon
- Hutchinson auger PTO 8" by 71 ft.
- Mayrath 72 ft. 10" auger w/swing hopper, PTO
- Mayrath 62 ft. 8" auger, PTO
- Mayrath 55 ft. 8" auger, PTO
- Mayrath 55 ft. 6" auger, PTO
- Mayrath 31 ft. 6" auger w/7 1/2 h.p. 3 phase motor
- Hutchinson 71 ft. 10" auger w/hyd. swing hopper, PTO
- Snowco grain cleaner 48" by 72" drum, new belts
- JD 150 bu. auger wagon, PTO
- Grain bin sweep auger w/motor, 15 ft.
- Bin extension auger at 45 degree angle, 8", new

## LIVESTOCK EQUIPMENT



- 1978 Ford 700 truck w/Harsh 350, 14 ft. 4 auger feed box & scale, 5 & 2 trans., gas
- Roto-Grind tub grinder on wheels, PTO
- 120 steel continuous fence panels, 6 bar, 20 ft.
- 60 steel portable corral panels, 5 ft. by 10 ft.
- Pape grinder mixer
- Baasch portable loading chute
- Registered brand, elec. iron, right hip
- Steel framed calving shed, 24' by 12', plywood lined
- Wire mesh steel hog panels
- Round bale feeder
- 2 wheel portable mineral feeding & fly control trailer w/front storage cupboard, NEW

## RECREATIONAL EQUIPMENT



- 2005 Honda 150 CRF motorcycle
- 2011 BMS go cart, 150cc, 8.5 hp
- 2008 Honda TRX500, 952 miles/150 hrs. on electric shaft
- 2 man portable blind, camouflaged to look like round bale of hay
- 1972 Starcraft boat w/140 Mercruiser Inboard/Outboard motor, motor is locked up, L/U is good, w/trailer

## IRRIGATION





2 Irrigation pumps 20 and 25 ft. long on wheels, one w/electric motor

Irrigation pipe fittings

Berggren PTO pump, 20 ft.

480 ft. of 8" Texflo mainline pipe

540 ft. of 10" mainline pipe

2 - drive over ramps of irrigation pipe

2 - Electric injection pumps

Aluminum irrigation pipe, 8", various gate spacings

Surge valves, 8"

High pressure shut offs, 8"

Aluminum pipe fittings, 8"

## MISCELLANEOUS

All items must be removed by August 25th. Any item left after August 25th will have a \$50 per day rental charge per item due to the Buffalo County Fairground. Loading after August 21st by appointment 308-233-4633 or 308-234-6266. NO LOADING ON SUNDAY AUG 23.

## TERMS

Payment in full day of auction by cash or approved check. I.D. required. \$25 title transfer fee applied to titled vehicles. Everything sells "as is" condition - no warranties. Not responsible for accidents.

**LUNCH: By Nelson Camp Stove**

[BACK TO LISTINGS](#)

**MARSHALL**  
LAND BROKER & AUCTIONEERS  
OF KEARNEY, INC.

Office Ph. 308/234-6266 Fax 308/237-7679

[HOME](#)