

# MARSHALL'S ABSOLUTE AUCTION

**FRIDAY, AUGUST 26, 2016 – 8:30 AM.  
Kearney, Nebraska**

**SALE SITE: Buffalo County Fairgrounds located from Hwy. 30 and Ave. N (Peavey Grain) 3/4 miles north on Ave. N.**

**PLAN TO ATTEND THIS ABSOLUTE AUCTION - EVERYTHING SELLS TO THE HIGHEST BIDDER.  
NO MINIMUMS.**

**LIVE ONLINE BIDDING AVAILABLE - Advance registration required.**

**COME PREPARED FOR TWO AUCTION RINGS**

**CHECK IN OF ADDITIONAL ITEMS FOR AUGUST 26 AUCTION IS CLOSED.**

**CALL SOON TO CONSIGN FOR MARCH SPRING AUCTION. THANK YOU.**

## RECENT ADDITIONS



Stock Trailer, 7 by 16

3 pt. bale spear

Bale fork for bucket

Single shank ripper

Gard Air portable STFTA air compressor V-4 Ford industrial engine

1,200 ft. 10" white plastic pipe

J&M Model 500-14 auger wagon

Safety ring, fits 36 ft. diameter grain bin

Demco 500 gal olipctical poly tank on skid

1998 Ford 460 power unit, propane radiator, clutch,

Murphy switches, approx. 5,000 hrs.

450 bu. grain cart

Grain hopper

Anhyd. applicator

2 sets lockers

4 wheel heavy hauler wagon

24 Baasch cattle panels

318 Chrysler Engine

300 gal. 3 pt. sprayer

Grain bin spreader

3 pt. quick hitch

Big Valley head catch

Westfield 100-71 auger

1996 Fruehauf flatbed trailer, 47' dropdeck, spread axle w/hayrack, spare tires

IHC 1586 tractor, 20.8-38 tires & duals, 3 hyd., w/10' 3 pt. dozer blade

Boss snowblade

(2) grain spreaders

8" overhead auger

Celebrity 20 ft. boat, V8 engine, runs well, new waterpump

1994 Wells enclosed snow mobile trailer

Orthman 608 auger wagon, 30" spacing, diamond tread tires

Orthman 608 auger wagon, 36" spacing, tractor tire tread

48 hog panels  
 1979 International grain truck, tag axle  
 (2) spools rope  
 Pipe trailer  
 1991 Kodiak bucket truck, diesel, 40' boom  
 2013 Alumilite motor cycle trailer, 12'  
 Worksaver snow blade, 10', for skid steer  
 Lowe drill attachment for skid stee, w/2 bits, 9" & 12"  
 300 gal. Schaben PTO sprayer w/boom  
 Round tank, fits front of tractor  
 (2) tool boxes Oil tank  
 Feed wagon  
 Horse trailer  
 Fencing trailer w/posts  
 Phoenix creep feeder  
 UFT 400 bu. grain cart  
 1957 Ford 641 Workmaster tractor, w/3 pt. scoop  
 Fruehauf tanker trailer

J&M 620 grain cart  
 8 trailer tires  
 Duetz power unit  
 Surge tank off Caterpillar power unit  
 5 bundles lumber  
 Concrete power trowel  
 Concrete saw  
 Hose reel  
 Hesston Stakhand 30  
 Steel T posts, 5 1/2 ft  
 Running gear trailer  
 Grass catcher  
 4 electrical boxes  
 5 hp air compressor, 28 gal.  
 Friesen 110 seed tender, single axle, w/Honda motor  
 2011 Doolittle Brute Force 20' gooseneck trailer w/ramps  
 Steel flatbed trailer w/built in toolboxes, fits Ford &  
 Chevy 1/2 ton to 1 ton  
 1999 Ford F-250, 4 wheel drive, 5x4 gas engine, 210,000 miles

## COMBINES, HEADS



2010 Case IH 7088 Axial Flow combine, 520/85R42 tires & duals, RTK ready, 600 monitor, long unloading auger, Big Top bin extension, 1173 engine & 919 separator hrs., For information call Chad 308-991-4040

1996 Case IH 2166 Axial Flow combine, Ag Leader monitor, 24.5-32 tires, 3282 separator & 4746 engine hrs., SN JJCO181381, For more information call Darcy 308-440-0697

Case IH 1020 platform head

Case IH 1064 corn head, 36" rows

JD 893 corn head, 8r30", single point hookup, head height control, hyd. deck plates, ear saver shields, SN X696789

JD 894 corn head, 10r30", knife rolls, hyd. deck plates, head height control, only 350 acres on rebuild SNX675856

JD 925F flex head, air reel, new rebuild by Landmark Implement, SN 686898

IHC 863 corn head, 6r30"

(2) 430 head trailers, new

(2) 435 head trailers, new

835 head trailer, new

Hydraulic driven corn reel for combine head, 6r30"

New Patriot corn head reel, fits JD 12r30"

Case IH 2208 corn head, 8r36", single point hookup, auto header height control, hyd. deck plates, SN HAJ0018618

Home built header trailer, 25 ft.

## TRACTORS, LOADERS



- 2004 Case IH MxM130 MFWD tractor w/Case IH LX146 loader w/7 ft. bucket & joy stick, 3 hyd. Remotes, Michelin radial tires, 3,500 hrs.
- Farmall H tractor, tricycle front, good tires
- 2007 Allmand TLB diesel 425 tractor w/loader & backhoe, 4 1/2 ft. loader bucket & 16" backhoe bucket, only 900 hrs.
- 1953 Ford Tractor NAA Golden Jubilee, wide front, 3 pt.
- JD 620 6 ft. loader bucket, quick attach, new

## TRUCKS



- 1996 Freightliner FLD112 twin screw semi, 10 spd. Fuller trans., Cummins M11 motor w/jake brake & air ride, 576,000 miles
- 1998 Freightliner FLD112 twin screw semi, 9 spd. Fuller trans., Cummins M11 select plus motor, air ride, 691,000 miles
- 1995 International 8200 twin screw semi, 10 spd. trans., Detroit 60 series engine, air ride
- 1977 Kenworth semi w/sleeper, tandem twin screw, 350 Cummins & 13 spd. trans.
- 1984 International S series truck, twin screw, 350 Cummins, 9 spd., Smeal 22 ft. steel silage box
- 1992 Kenworth T450 truck w/3306 cat., 300 hp, Fuller 9 spd. trans., tandem air tag, locking differential, double framed & Kann aluminum box, 22' x 102", reinforced floor for pallets & cargo doors, rollover tarp, 385,000 miles
- 1987 Kenworth T600 truck, tandem twin screw, w/350 Cummins, 9 spd. trans., & 970,000 miles, near new fifth wheel
- 1981 IHC truck, 6 cyl., diesel, 5 & 2 sp. trans., air tag & brakes, w/20 ft. steel sided box, cargo doors & twin cylinder hoist
- 1972 GMC truck, tandem, gas, service body w/boom
- 1962 IHC BC160 truck, gas, single axle, 4 & 2 spd. trans., only 65,000 miles, w/13 1/2 ft. box & hoist
- 1985 Mack RD600SX truck, tandem twin screw, w/Harsh manure box, HD Allison auto. trans.

## PICKUPS & VEHICLES



- 1999 Ford F-250 extended cab pickup, 4x4, 5.4 liter Triton gas engine, 2000 miles on new transmission
- 1999 Ford F-350, 4x2, V10 engine, auto trans., long box, power windows & locks, high miles

## TRAILERS





- 1997 Wilson 48' aluminum double hopper bottom trailer w/high sides, triple axle
- 1996 Timpte 42' double hopper bottom trailer w/high sides, tandem axle
- 1995 Cherokee aluminum gooseneck stock trailer, 20' x 6'8" wide
- 1984 Haydes 2 horse trailer w/mats, bumper pull, 7 ft. tall, front tack room
- 1989 TravAlong gooseneck flat bed trailer, 20 ft., 4 ft. dovetail, ramps & 3-7000 lb. torsion axles
- Gooseneck flat bed trailer, 21 ft. x 8 ft., steel deck, 10,000 lb. dually, dovetail & fold down ramps
- 2002 Buck Dandy trailer, 8 ft. x 16 ft., bumper pull, tandem axle
- 2001 Buck Dandy utility trailer, 18 ft., steel floor, tandem, 6000 lb. axles w/16" tires
- 2013 H&H aluminum utility trailer, 14 ft., tandem axle, ramp, brakes on both axles
- 2013 H&H aluminum trailer, 5 ft. x 10 ft., single axle, w/bi-fold ramp
- Flat bed trailer, 5 ft. x 10 ft., bumper pull, folding ramp, 6" channel iron frame & 5200 lb. axle
- 1973 Freuhauf flat bed trailer, 45 ft., new steel floor, hayrack, good rubber & lights
- 1995 Coach Works 18' Bp cargo trailer
- Snowco tiltbed trailer, 4 1/2 ft. x 10 1/2 ft.
- Gooseneck flat bed trailer, triple axle, 20 ft. w/4 ft. dove tail
- Flat bed trailer, 6' x 18', tandem axle (no title)
- Lowboy trailer w/dolly wheels, new floor, 18'
- 1994 Ready Haul goose neck flatbed trailer, 25 ft., triple axle, w/dove tail & ramps
- Enclosed trailer, single axle, 6 ft. by 14 ft., double rear doors
- Tandem axle 6x12 trailer w/brakes
- Semi van trailers, for storage

## MACHINERY



- Orthman OneTripper, 8r30", near new
- Orthman 16r30" cultivator folding toolbar w/category 4 high lift hitch, (toolbar only)
- Orthman 8r30" cultivator folding toolbar w/category 3 medium lift hitch (toolbar only)
- Orthman 16r30" cultivator folding toolbar (no hitch, toolbar only)
- Orthman 12r36" planter folding toolbar (no hitch, toolbar only)
- 9 shank ripper, hyd. gauge wheels, 3 pt.
- JD 10 ft. disc, good
- IHC 490 disc, 24 ft. w/lift harrow
- Marliss 20' no-till drill, 3 pt. hyd. markers
- 6r36" Anhydrous applicator
- Krause 13 1/2 ft. disc
- Krause 10 ft. disc

## TRANSCAN MOTORSPORTS GROUP All of these items are unused





- 72" Skid Steer Attachment Broom Sweeper
- 72" Skid Steer Attachment Angle Broom
- Skid Steer Hydraulic Trencher
- (2) 9000 LB Heavy Duty Two Post Auto Lift
- (3) 94" Hydraulic Skid Steer Loader Dozer Blade
- (2) 72" Forklift Fork Extension
- 20' Heavy Duty Bi-Parting Wrought Iron Driveway Gate (to sell as one pair)
- 20' X 30' X 12' Peak Ceiling Storage Shelter C/W: Commercial fabric, roll up door
- 30' X 40' X 15' Peak Ceiling Double Door Storage Building w/commercial fabric, waterproof, UV and Fire Resistant, 12' x 12' drive through doors at two ends
- 30' X 65' X 15' Peak Ceiling Double Door Storage Building w/commercial fabric, waterproof, UV and Fire Resistant, 12' x 12' drive through doors at two ends
- (2) 10' x 20' Storage Party Tent Shelter w/windows, front door, side door, air vent, side shade
- (2) 16' x 22' Marquee Event Tent w/320 sq.ft. one zipper door, 7 windows, heavy duty frames and fabrics
- (2) 20' x 20' Pagoda Party Tent w/side walls, windows and zip doors
- (2) 20' x 40' Full Closed Party Tent w/800 sq.ft, doors, windows, 4 side walls included
- 50 Ton Hydraulic Shop Press
- Heavy Duty Tire Changer w/110v 60 hz
- Heavy Duty Wheel Balancer w/110v 60 hz
- (2) 3 PTO Heavy Duty Wood Chipper w/fit 40-70 hp
- (2) 10' 20 Drawer Heavy Duty Metal Work Bench with hanging peg board w/40" high hanging peg board, stainless steel drawer panel, metal handles
- (2) 3/8" X 50' Air Hose Reel
- (2) 1" Dr. Air Impact Wrench Kit
- (4) Welding Helmet Solar Power
- (10) Battery Load Tester

## SKID STEER ATTACHMENTS

All of these items are unused



- Lowe 750 hyd. auger, 9" & 12", w/skid steer quick attach
- Stout 66-9 brush grapple, w/skid steer quick attach
- Stout 72-8 brush grapple, w/skid steer quick attach
- Stout HD72-4 brush grapple, close-tine, w/skid steer quick attach
- Stout HD72-FB grapple bucket, w/skid steer quick attach

- Stout 72-3 rock bucket grapple, w/skid steer quick attach
- Stout 72 material bucket, w/skid steer quick attach
- Stout 84" tooth bucket, w/skid steer quick attach
- Stout stump bucket, w/skid steer quick attach
- Stout 96 snow bucket, w/skid steer quick attach
- Stout tree & post puller, w/skid steer quick attach
- Stout receiver hitch plate, w/skid steer quick attach
- Stout 48" walk-through pallet forks, w/skid steer quick attach
- Stout 48" full-back pallet forks, w/skid steer quick attach
- 48" regular pallet forks, w/skid steer quick attach
- (4) Skid steer tires, Maxam 12-16.5, 12 ply (sell as one lot)

## EQUIPMENT



- JD 3970 forage harvester w/electric monitor & JD 3r30" row crop head, just rebuilt
- Miller Bobcat 225G welder/generator
- Bison 10 ft. blade, all hyd., 3 pt.
- 8 ft. box blade, new
- 10 ft. box blade, new
- 12 ft. box blade, new
- 140R 6 way pull type grader, 14 ft., new
- Mayville 24'9" scissor lift (aerial work platform) max. 850 lbs.
- Bushog T07R shredder, 7 ft., 3 pt.
- Shwartz wide front end, adjustable, off JD 50 tractor
- Home built 3 pt., fits JD 50 tractor
- 8 steel wheels w/tires, 22.5 low profile
- Trailer axles
- 40 truck tires, all reconditioned & very good, various sizes
- (2) Cabs for JD 4020 tractor
- JD 3 pt. rollover plow
- Krause pull type chisel, approx. 15 ft.
- JD 35 forage harvester, 2 row, 5 ft. hay head
- New and used generators
- (2 pallets) Heavy duty parts bins, 22" wide x 24" deep x 7" tall with dividers
- (2 pallets) Heavy duty parts bins, 15" wide x 24" deep x 18" tall with dividers
- (1 stack) Plastic pallets, 45" wide x 48" deep x 6" tall
- (1 stack) Wire baskets
- Pallet Racking
- Heavy duty Rubbermaid platform carts
- (5) Work bench units with drawers, new in box
- Steel storage rack
- (20) 3" x 35' ratchet straps, new

- Stout grapple bucket for skid steer loader
- 650 gal. tandem fuel trailer & tank w/12 volt 20 gal./min. pump & 2 baffles
- (2) 75 gallon planter tanks
- (2) saddle tanks, 250 gal., universal mount
- IHC shredder, 15', pull type
- Hub spacers, 9 bolt, 10", black, off of IHC 1086
- JD 110 chuck wagon
- Power washer w/gas motor
- 12 JD front tractor weights (4840)
- 3 pt. blade
- Silage wagon, Midwest Hoist, big 12.5-16 tires
- 18.4-38 duals w/radial tires
- JD tractor fenders, fit 4520
- Cimarron shredder, 3 pt., 7 ft.
- (2) silage wagons on gears w/hoists
- Degleman 9 ft. blade w/2 pt. fast hitch
- Danus 8 ft. blade w/2 pt. fast hitch
- 2 welders
- 4 spools rope, approx 2 1/2 miles on each spool
- 3 large spools rope
- Generator, Detroit engine, transfer switch, battery charger
- 4 gang boxes
- Small gas powered rope puller
- 3 conduit benders
- 3 pt. blade, 9 ft.
- Bush Hog , model 12510, 3 pt., needs clutch work
- Frontier grooming mower, 90", 3 pt.
- 10 JD suitcase weights, narrow front
- Bush Hog 7 ft. rotary mower, 3 pt.
- Bearcat 950 grinder, extra knives

(2) Pallet jacks  
(13) fall protection safety harnesses  
File cabinet  
Small shelf unit  
6' wooden step ladder  
Walker mower, model MTSD, 20 hp, 52" deck, side discharge, self-dumping box, SN 59097  
Steel shop bench, 7 1/2 ft., heavy duty  
Tool box  
Side dump silage wagon  
High Tensal cable, several hundred feet  
1000 gal. diesel tank w/pump

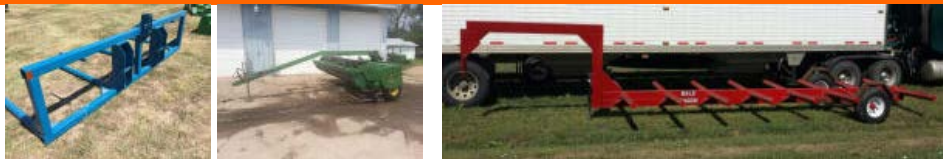
King Cutter shredder 3 pt., 4 ft.  
King Cutter shredder 3 pt., 6 ft.  
3 pt. blade, 7 ft., near new  
(2) JD 4010 fenders  
Winpower PTO generator, model 25-15  
Gehl PTO silage blower  
Milo guards  
Hardi pull type sprayer, 45 ft., 500 gal., less than 500 acres on EZ  
Flow Boom, pressure controls, foam marker  
3 pt. sprayer, 2 electric booms, 540 PTO sprayer pump  
3 pt. mist blower

## GRAIN HANDLING EQUIPMENT



JD 410 Grain cart  
J&M 525 auger wagon  
Mayrath 62 ft., 10" auger, w/electric motor, new gear box  
Sukup stirator for 24 ft. drying bin  
Aeration fan, 5 hp  
Westfield TR80 8" auger, 61 ft., PTO w/swing hopper  
Grain auger, 75 ft., 12", PTO w/hyd. rolling swing hopper  
Feteral 12" swing hopper w/electric motor mount, no moter  
Westfield MK100-71 auger w/swing hopper  
U trough auger 12", 66 ft., never used  
Hutchinson 8" auger, 63 ft., PTO  
Grain auger, 8" x 27 ft., 3 hp. electric motor  
Peck auger, 8" x 56 ft., PTO  
27 ft. auger, 7 hp. electric motor  
New Idea side delivery rake  
New Idea sickle mower  
65 ft. grain auger, PTO, 5 hp Century Electric motor  
Grain dryer w/elec. motor  
Westfield add on hyd. swing hopper wheels & controls  
Small auger w/electric motor  
Roof auger, 54' by 8"  
Roof auger, 32 1/2' by 8"  
Roof auger, 39" by 8"  
Aeration fans

## HAY EQUIPMENT



(2) JD 1424 swathers, 14 ft. head, hydro swing, 540 PTO  
JD 1380 swather, hydro swing, 1000 PTO  
JD 858 side delivery rake, new teeth  
JD 851 side delivery rake

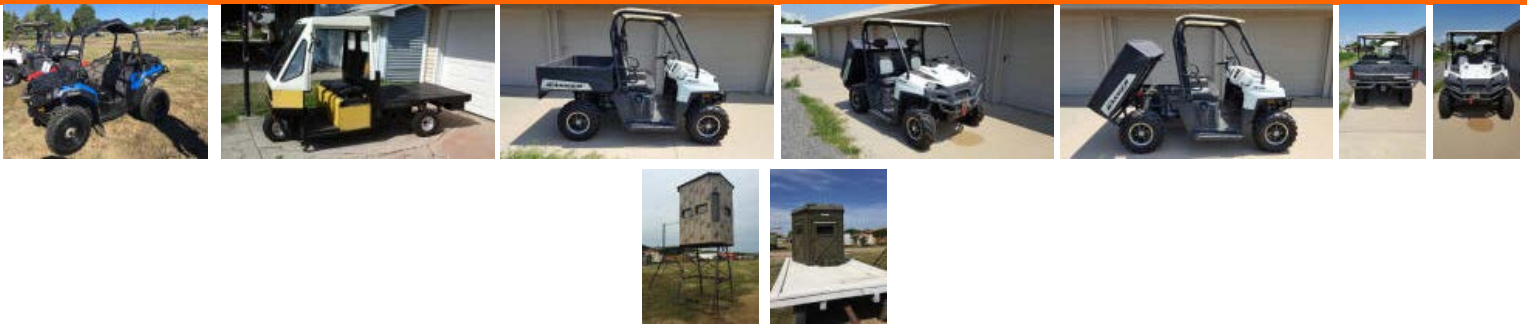
JD 24T square baler  
NH side delivery rake  
Bohnert double bale fork, 3 pt.  
2014 Industrial America gooseneck round bale trailer, 8 bale, gooseneck added new in 2016  
NH BR780A round baler, net wrap, approx. 9,000 bales  
NH 259 side delivery rake  
Pickup round bale handler & unroller  
F-10 hay sweep w/steel teeth  
3 pt. 2 bale carrier  
2 pt. 1 bale carrier  
Boom extension  
Boehnert double bale fork, 3 pt., new

## LIVESTOCK EQUIPMENT



120 steel continuous fence panels, 6 bar by 20 ft., new  
60 steel portable corral panels, 5 ft. by 12 ft., new  
50 steel continuous fence panels, 6 bar x 20', 1 1/4, 14 gauge, new  
10 steel continuous fence panels, 6 bar x 20', 1 5/16, 11 gauge, new  
5 steel gates, 4' x 14', 7 bar w/chain latch, new  
5 steel gates, 4' x 16', 7 bar w/chain latch, new  
Patriot 150 bu. creep feeder  
Pickup stock rack  
(14) steel hog gates, 6 ft. to 16 ft.  
(2) metal hog huts  
(6) panels for raised deck  
Water troughs  
10 tire feedbunks

## ATV'S & RECREATIONAL EQUIPMENT



2010 Polaris Ranger 800XP side by side, w/front winch, dump box, only 1128 miles & 149.9 hrs.  
2015 Polaris Ace 570, fuel injected, 570 cc, hi/low range selectable 4 wd, front & rear bumpers, 1/2 windshield, top, rear cargo box, 7,400 miles  
Honda TRX 90 motorcycle  
1982 Cushman truckster w/flatbed, 3 spd. trans, needs ignition work  
2006 Polaris 90cc Predator 4 wheeler  
2004 Polaris 90cc Predator 4 wheeler  
Dinli 90cc 4 wheeler  
(2) Tower deer stands  
Portable deer blind



## IRRIGATION



Case IH 4390T diesel power unit, turbo, clutch, radiator on 2 wheel cart

(4) Walker pivot wheels

(15) 11R-24.5 pivot rims

Pivot track closer, 2 disc, 3 pt.

All items must be removed by Sept. 2. Any item left after Sept. 2 will have a \$50 per day rental charge per item due to the Buffalo County Fairground. Loading after Aug. 30 by appointment 308-233-4633 or 308-234-6266. No loading on Sunday Aug. 28.

## TERMS

Payment in full day of auction by cash or approved check. I.D. required. \$25 title transfer fee applied to titled vehicles. Everything sells "as is" condition - no warranties. Not responsible for accidents.

**LUNCH: By Nelson Camp Stove**

[BACK TO LISTINGS](#)

**MARSHALL**  
LAND BROKER & AUCTIONEERS  
OF KEARNEY, INC.

Office Ph. 308/234-6266 Fax 308/237-7679

[HOME](#)