

Retirement  
Farm Machinery  
**AUCTION**

Tuesday, March 12 – 10:30 A.M.  
Minden, Nebraska

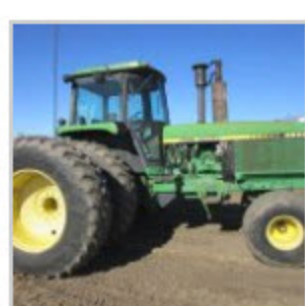
From the south edge of Minden, 3 ½ miles south on Highway 10,  
3 miles east on G Rd. and ¼ mile north.

**LIVE ONLINE BIDDING** – Available on major equipment. Pre-registration required.

[Online Registration/Catalog](#)

**Vern Christensen**  
For info call **308-830-0478**

**TRACTORS, LOADERS**



JD 4650, QR, 3 hyd., frt. Wts., 20.8-38 duals, engine OH approx. 600 hrs. ago, SN RW4650H014203

Farmall Super MTA, narrow front

Farmall 350 utility, 2 pt.

Ford Jubilee, 3 pt.

**TRUCKS & TRAILERS**



2005 Freightliner Columbia, day cab, single rear axle, Detroit, Allison auto., excellent tires

2003 Wilson Pacesetter 50 ft. spread axle hopper btm.

1990 DMF 22 ft. hopper btm., newer tires & brakes

**EQUIPMENT**



JD 1720 12 R36 planter, Orthman bar, JD finger furrow openers, precision plates, liquid w/Redball

JD 520 flail shredder

Westfield 10" by 71' auger w/swing hopper, PTO, excellent

Wil-Rich flopper-chopper, pull type

Mitsubishi diesel powerunit, radiator, clutch, switches, only 144 hrs.

Ford 300 6 cyl. Engine on cart, radiator, clutch

Krause 18 ft. chisel w/sweeps

JD 400 21 ft. rotary hoe

IHC 13 ft. disk

Orthman anhydrous applicator, Hiniker, dual

Header trailer, approx.. 25 ft.

3 pt. springtooth

Pull type sprayer, 36 ft., 700 gal. tank

4 cyl. Engine on cart

Vertical pit pump, PTO

8" Flow meter

8" & 10 " pipe fittings

(2) sets of Helicopter saddle tanks, 300 gal. tanks & 260 gallon tanks

300 Gallon fuel tank

2 pt. to 3 pt. hitch adapters

Propane tanks, approx.. 300 gal. & 700 gal.

4 Wheel header trailer

Steel cattle panels

2 – Pipe trailers

PTO pit pump

(2) Flare box wagons

Parts for DuAL loader

JD wire bars for 9560 rotor combine

Husker golf cart

Dune buggy, 1600cc VW engine, manual trans.

Hobartt portable welder, gas engine

Space heaters

Elec. motors

JD rate controller

Drive shafts, mufflers, etc.

**Gain Bins** – (to be moved) 5,000 Bushel steel bin, 2,000 Bushel steel bin, Elec. converter for single phase to 3 phase for bins.

Following items are located from Minden, 2 miles east on Hwy. 6 & 34 and 1/8 mile north. They will be sold from the auction site. Please pre-inspect.  
Farm Fans CMS-10E propane grain dryer  
1,000 Gallon fuel tank w/pump  
(2) Hutchinson elec. augers, 6" & 8"  
8" PTO auger, approx. 70 ft.

**TERMS**

TERMS: Payment in full day of auction by cash or approved check. I.D. required. Everything sells in "as is" condition – no warranties. \$25 transfer fee on titled vehicles and trailers. Not responsible for accidents.

Lunch by – Hungries Food Truck



Search our site