

March 5 – Machinery – Kearney, Nebraska

## MARSHALL'S ABSOLUTE AUCTION

TUESDAY MARCH 5, 2019 – 9:00 A.M.

KEARNEY, NEBRASKA

AUCTION SITE: Buffalo County Fairgrounds located from Hwy. 30 and Ave. N (Peavey Grain) 3/4 miles north on Ave. N.

PLAN TO ATTEND THIS ABSOLUTE AUCTION – EVERYTHING SELLS TO THE HIGHEST BIDDER.  
NO MINIMUMS

LIVE ONLINE BIDDING – Advanced registration required.

COME PREPARED FOR TWO AUCTION RINGS

Check in of additional items for this auction is closed.  
Call soon to consign for the August pre-harvest auction.  
Thank you

Online catalog will start at approx 10:30 a.m.

[Online Registration/Catalog](#)



### RECENT ADDITIONS





2000 Shoreland'r boat trailer, 19 ft., non-tilt, single axle, VIN 1MVUH5R11YA130817 (no title)

Rowse hayrake

28 ft. Aer-motor windmill w/8 ft. wheel

8" Irrigation pipe

Hopper bottom trailer, pull type, 70 bu.

1979 WW 6' by 20' steel gooseneck trailer, no title

2008 Ford E450 Cutaway bus, 6.8L V10 SOHC 20 V gas engine, 12 passenger + 2 wheelchairs, power steering, power brakes, Braun Wheelchair lift, 120,595 miles, VIN 1FD4E45S88DB51656

2006 Ford E450 Cutaway bus, 6.8L V10 EFI SOHC gas engine, 12 passenger + 2 wheelchairs, power steering, power brakes, Braun Wheelchair lift, 142,167 miles, VIN 1FDXE45S46DA251191

2004 Chevrolet Venture Extended Sports van, 3.4L V6 OHV 12V, 4 speed automatic, front wheel drive, 149,659 miles, VIN 1GNDX03E84D256106, needs some front end work

2001 Ford F150 XLT, super crew, 5.4L V8, automatic

2015 Haybuster 2655, short cut, big tires, like new, always shedded

Westendorf loader and mounts, controller

JD 707 shredder, 14 ft.

Electric swinging gate, white

JD 535 baler

(2) pop machines

Pivot tires

Grill guard off 2011 Chevrolet pickup

JD electric grease guns

Rear end w/axle & duals, 2 spares

Tilt trailer

1998 5th Wheel Hitchhiker camper, 40 ft., 3 slide outs, roll out awning, 3 axle, some water damage

Gravity wagon, 250 bu. w/hyd. auger

Bale trailer

Posthole digger, 3 pt.

(2) 2005 Great Dane semi trailer, 28 ft. w/reefer unit, roll up doors

1999 Ford F450 truck, 10 ft. box, additional 4 ft. deck plate

1995 Dodge Ram 3500 truck, 10 ft. box, reefer unit

2007 Ford F250 pickup

2009 Ford F250 pickup

Forklift teeth

Pressure tank

Orthman lift assists

Pivot tire covers

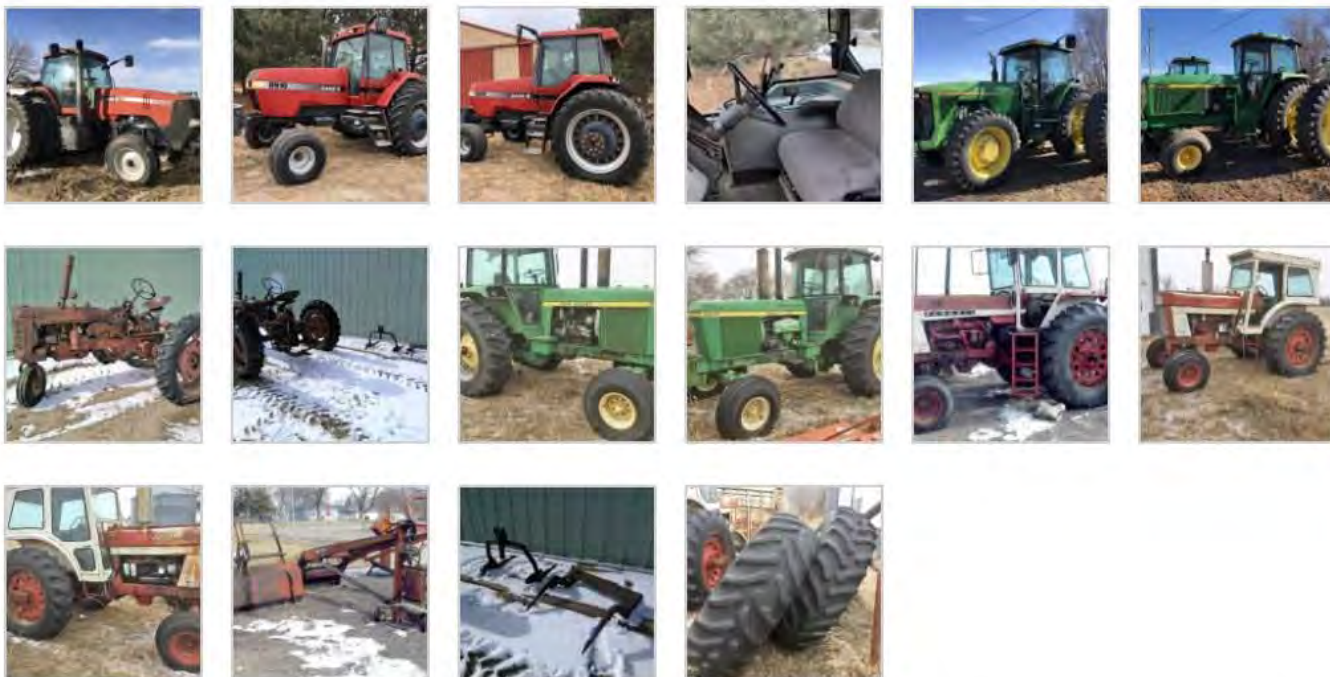
Tilt bed trailer

(2) Allis Chalmers motors

Century 2028 tractor, diesel, w/C-system 50 loader, 64" bucket

Land Pride BH1560 backhoe attachment

## TRACTORS, LOADERS



2004 Case IH MX210 tractor, frt. wts, 2 wd. new front tires, 480/80R46 rear tires & duals, 3,000 hrs. SN JAZ130885

1995 JD 8300 tractor, MFWD, 12 front wts., rear wheel wts., 5 hyd., 380/85R34 front tires, 480/80R46 rear tires w/duals & spacers, quick hitch, 6,791 hrs., SN P001072. For more information call Dennis Webben 308-383-0241

1992 JD 4560 tractor, 15 sp. power shift, 18.4R46 tires & duals w/spacers, 10 front wts., quick hitch, 3 hyd., 9,644 hrs., SN P001860. For more info call Dennis Webben 308-383-0241

1998 Case IH 8910 tractor, 2 wd., quick hitch, frt. wts., 18.4-42 tires & duals, 3 hyd., 540/1000 PTO, 4,467 hrs., SN # JJA0073695

JD 4630 tractor, good rubber

Set of duals for JD 4630 tractor

1975 Case 1070 tractor w/Dual 3100 loader, 4,502 hrs.

1956 JD 60 tractor, wide front, power steering, 3 pt.

1953 Super C tractor, single front, 2 pt. quick hitch w/3 pt. factory hitch, PTO and belt pulley

Quick tach for IHC sickle mower

1940 Farmall H tractor, gas, narrow front, 540 PTO, SN33084

International 1066 tractor

Farmall 806 tractor W.F., cab, 2 pt.

F11 loader w/8' bucket grapple

IHC 1086 tractor

## TRUCKS



2001 Mack CX613 semi truck, tandem twin screw, 10 speed, new fifth wheel plate, new brakes, good rubber, 768,000 miles, SN IMAE06Y51W009682

1979 IHC S series 1824 tandem axle truck, gas, 5 & 2 spd. trans., w/20 ft. steel sided box & hoist

1970 International Loadstar F1800 truck, new fuel pump 11/18

1981 Ford truck, single axle, diesel, 10 spd.

## VEHICLES



2009 Chevrolet 2500HD pickup, 4x4, crew cab, 6.0 V-8, auto. trans., Michelin tires

2002 Ford F-150 XLT pickup, 4x4, 4 door extended cab, 201,000 miles, needs engine work

2000 Chevrolet 1500 Silverado pickup, new battery 11/18, 144,000 miles, fuel gauge does not work

1994 GMC Sierra 1500 pickup, club cab

1994 Chevrolet 1/2 ton pickup, 4x4, short box, 350 engine, auto trans., w/3" lift kit

1991 Chevrolet S-10 pickup, 2 wd., 5 spd., V-6, 150,000 miles

1987 Ford F150 flatbed

## TRAILERS



1993 Travalong gooseneck stock trailer, 7 ft. by 20 ft., steel, torsion axles

1988 Shelby gooseneck stock trailer, 6 ft. by 20 ft., steel, w/good wood floor

1976 Hale gooseneck stock trailer, 6 ft. by 20 ft., steel, torsion axles

5 ft. by 10 ft. home built trailer, folding ramp, 3,500# axle, 2" ball and 12" solid sides, new

2015 Kaufman flatbed trailer, pumper pull, ramps, 2 axles

2012 H&H utility trailer, 5 ft. by 12 ft., solid sides, w/new spare tire

Home built 2 wheel trailer

Homemade 8 ft. by 16 ft. car trailer, steel, bumper pull

## PLANTERS



JD 7300 MaxEmerge 2 planter, 6r36" w/JD 200 monitor, pump & redball for liquid fertilizer, all plates for beans, corn & small kernel corn

JD 7100 planter, 8r36", Orthman markers, insecticide boxes, finger pickup

JD 2 row planter, 3 pt.

JD 1 row planter, 3 pt.

## MACHINERY



- Rhino RC25 stalk shredder, PTO, 3 pt., 6r36", new knives one year ago
- Besler rolling stalk cutter, 6r36", 3 pt.
- bhm 9100 cultivator, 6r36", w/shields
- IHC 490 disc, 24 ft. folding w/7 1/2" spacing
- Hesston 14 ft. chisel, 3 pt., high clearance
- Krause 17 ft. pull type chisel
- JD 25 ft. field conditioner, 3 pt., w/3 bar lift harrow, folds
- Blu-jet Anhydrous applicator, 12 shank, 25 ft. w/rolling coulters
- Brady 8r30" stalk shredder, 3 pt., w/lift assist wheels, 2 sizes PTO shafts
- 3 pt. roto-tiller, 6r36"
- 3 pt. whooper chopper, 6r36"
- Krause chisel, pull type, 10 ft. w/lift harrow
- Hesston 2210 field conditioner
- JD Roller packer, 10 ft.
- Krause 14 ft. chisel, 3 pt.
- JD 4 row roto hoe, 3 pt.
- 12 row cultivator shields w/brackets for Orthman 9300,9322 or Case IH 2220
- 12 Dawn row cleaners w/trash coulters
- 24 JD planter down force air bags w/brackets, new
- 24 JD planter rubber closing wheels

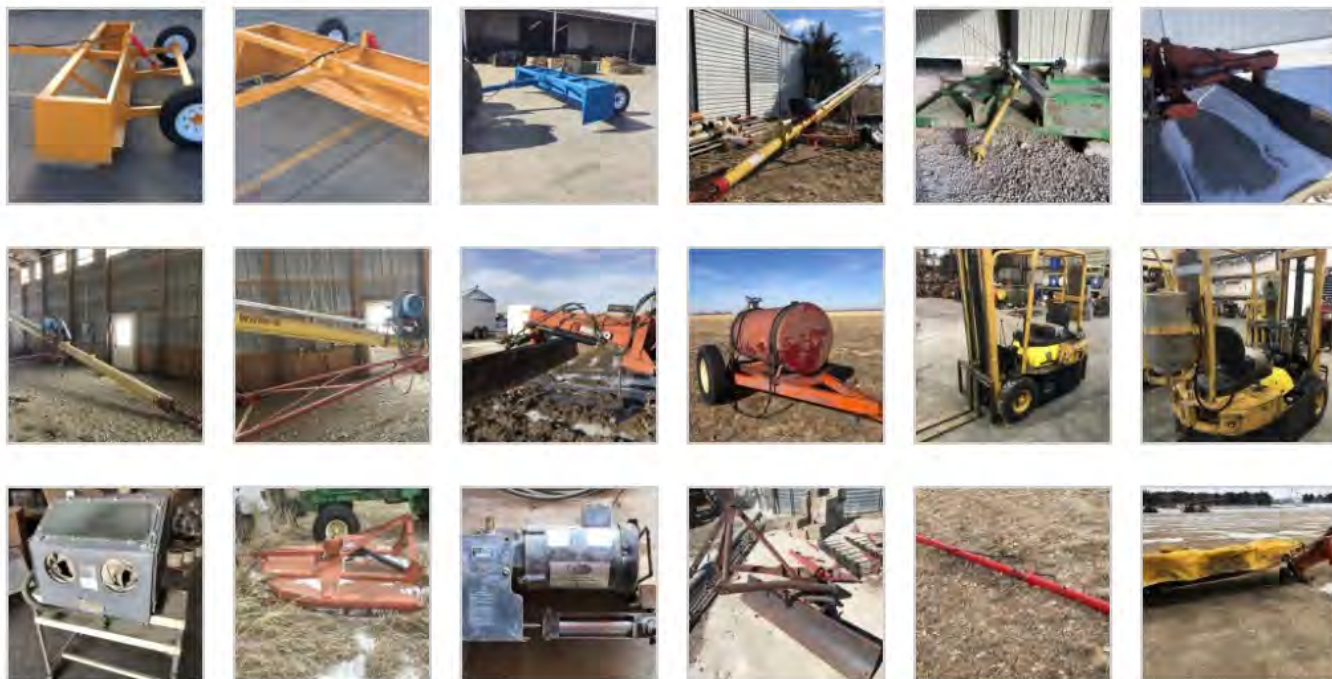
## SKID STEER ATTACHMENTS



- All of these items are unused and are w/ skid steer quick attach
- Lowe Hyd. Auger 750 w/9" & 12"
- Lowe Hyd. Auger 750 w/9", 12" & 15"
- Stout Brush Grapple 66-9
- Stout Brush Grapple 66-9

Stout Brush Grapple HD 72-8  
 Stout Brush Grapple HD 72-4  
 Stout Brush Grapple XHD 84-6  
 Stout Grapple Bucket HD 72-FB  
 Stout Rock Bucket Grapple HD 72-3  
 Stout Rock Bucket/Brush Grapple Combo HD 72-3  
 Stout Material Bucket, 84" w/double cut edge  
 Stout Stump Bucket  
 Stout Receiver Hitch Plate  
 Stout Full-Back Pallet Forks, 48"  
 Regular Pallet Forks, 48"  
 Stout Add-on Fork Grapple

## EQUIPMENT



Rhino blade, 3 pt. w/3 way hydraulic  
 Westfield 100-50 auger, 10" by 51 ft., w/25 h.p. 240 electric motor & long cord  
 Westfield WR80-31 auger, 8" by 31 ft., w/7.5 h.p. 3 phase motor  
 Westfield auger, 10" by 30 ft., electric, 10 h.p.  
 York grain leg, 20 ft., 3,000 bu. per hr.  
 Hyster Model 20 forklift, 3 wheel, propane, 2,000 lb. capacity  
 1976 White MY80B forklift, 4 wheel, 8,000 lb. cap., Chrysler slant 6 propane engine  
 Central Pneumatic double door abrasive blast cabinet  
 Kubota 4 ft. box scraper, 3 pt.  
 EZ-Trail 400 bu. auger wagon, needs gear box  
 Kewanee 9 ft. blade, 3 pt., hyd.  
 110 gal. 3 pt. sprayer w/boom & pump  
 Winco 20,000 KW generator, 540 PTO, single phase, 120v/240v, on 2 wheel cart  
 Howse 7 ft. shredder, 3 pt.  
 Snyder helicopter tanks, 260 gal. each  
 Fuel tank trailer, 300 gal. w/elec. 12v pump  
 2,000 gal. diesel tank w/12v pump, pumps 20 gal. per minute  
 Friesen 110 one box seed tender on tandem axle trailer w/Honda gas motor  
 Seed auger for side dump tender, DC motor & controls  
 Acura trak guidance hitch by Sunco SN# D17L621JCC  
 Cimarron 8 ft. shredder, 540 PTO, 3 pt.  
 Better Built 1500 honey wagon  
 Shredder, 6'  
 Redball planter brackets, new  
 RedBall 250 gal. tank w/mounts, fits JD 8000 series & newer tractors

Liquid fertilizer drops, new  
 Box blades, new  
 3 pt. blades, new  
 John Blue fertilizer injection pump  
 Header trailers, new  
 Orthman track filler w/Blu Jet packer  
 Pivot track closer, new  
 Rhino RDM9 disc mower, 9 ft.  
 JD 9 ft. blade, 3 pt., w/angle cylinder  
 3 pt. fork lift, hyd.  
 Hyd. 3rd length  
 Post hole digger, gas  
 3 pt. bale carrier  
 Pickup fuel tank  
 Black Max 6250 portable generator, 5000 continuous watt  
 Log splitter  
 2 - 10 ft. panels  
 Pickup box stock rack  
 300 gal. propane tank  
 Drill press  
 Welder  
 (2) 3 pt. quick hitches, cat. 3  
 Welding Table  
 3 pt. post hole digger  
 4 wheeler sprayer  
 Power rake w/gas motor

Liquid fertilizer hose, new  
12 row Redball unit, used  
John Blue fertilizer pump, only 1,400 acres  
2010 Ford Super Duty pickup box, 8 ft.  
2010 Ford Super Duty pickup rear bumper & hitch

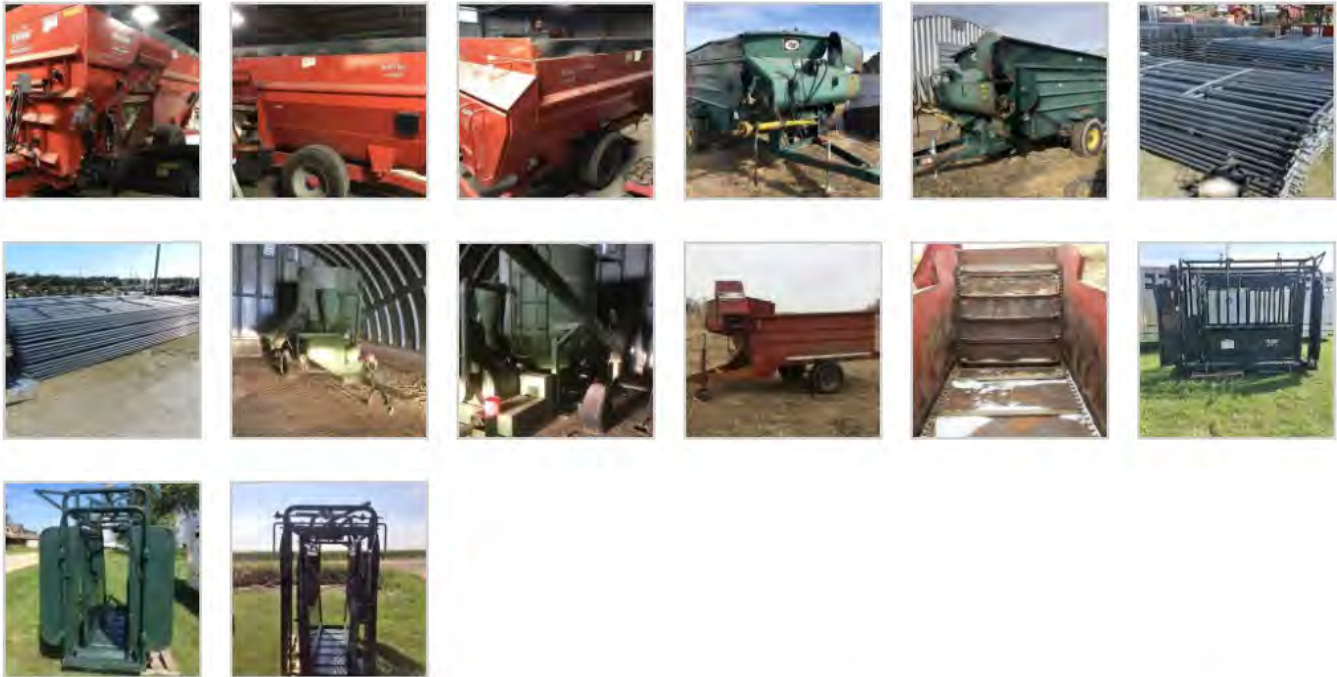
2 - semi-tool boxes, one in frame mount, one side mount  
Truck & implement tires, various sizes, new  
ATV folding boom  
(2) 400 gal. water tanks, plastic  
Heavy duty shop bench  
3 pt. blade

## HAY EQUIPMENT

JD 535 round baler, twine tie w/monitor  
NH 56 side delivery rake, rubber mounted teeth  
NH 451 sickle mower, 3 pt., 7 ft. bar  
Vermeer 605 D round baler, twine tie  
NH 1431 swather, disc bine, hydro swing, 14 ft.  
NH 855 round baler, twine tie  
Vermeer 7020 rotary disc mower  
NH sickle mower  
Heavy duty double bale fork, 3 pt.



## LIVESTOCK EQUIPMENT



2012 Kuhn Knight Botec 4142 4-auger feed wagon, roughage max package, 4 ft. 3 auger discharge, Digi-star scale w/2 scale heads, new liner, always shedded  
Art's Way Sila-Mix 800-B feed wagon, 5 ft. by 12 ft.  
Kelly Ryan feed wagon  
Behlin Big Valley squeeze chute, w/extra head gate, New  
WW squeeze chute w/self head catch  
JD 400 grinder mixer w/2 sets of screens  
80 steel continuous fence panels, 6 bar by 20 ft., includes bag of clips, new  
40 steel portable corral panels, 5 ft. by 12 ft., new  
16 steel cattle panels, free standing, 24 ft. long, new  
60 steel cattle panels, free standing, 24 ft. by 68" tall, 6 with gates  
Hay trailer, new  
Silage feeding trailer, new  
25 miles new barbed wire, 1/4 miles rolls  
50 Creosote wooden fence posts, new  
1000 steel "T" posts, new

## ATV'S, RECREATIONAL VEHICLES, MOWERS



2014 Polaris Ranger XP 900, power steering, 6,200 miles  
2006 Foreman 4-wheeler

## IRRIGATION



JD T6068 diesel power unit, radiator  
Lima MAC 480v generator, Model 280MDL0054-1  
1100 gal. fuel tank  
Ford 300 power unit, propane, radiator & clutch  
Chevrolet 454 natural gas power unit, cast aluminum head cover, approx. 10,000 hrs.  
12 pivot tires & rims, 11.2-38  
1140 ft. 10" white plastic pipe, 20" gates  
690 ft. 10" white plastic pipe, main line  
1200 ft. 8" white plastic pipe, 20" gates  
1410 ft. 8" aluminum gated pipe, various gate lengths  
600 ft. aluminum 6" pipe, main line  
2550 Ft. Tex-Flow 10" aluminum pipe, 20" gates  
(1) 8" 20 ft. aluminum pipe, 18" gates  
(2) 8" 25 ft. aluminum pipe, 40" gates  
(3) pipe trailers  
Pipe trailer w/extra long tongue  
Misc. aluminum pipe fittings, T's, 45 elbows, plugs, reducers, etc.  
8, 9, & 10 inch elbows, T's valves & plugs  
Irrigation socks  
Belt drive gear head

All items must be removed by March 12. Any item left after March 12 will have a \$50 per day rental charge per item due to the Buffalo County Fairground. Loading after March 8 by appointment 308-233-4633 or 308-234-6266. No loading on Sunday March 10.

## TERMS



Payment in full day of auction by cash or approved check. I.D. required. \$25 title transfer fee applied to titled vehicles. Everything sells "as is" condition - no warranties. Not responsible for accidents.

LUNCH - By Nelson Camp Stove

CONDUCTED BY  
MARSHALL  
LAND BROKERS & AUCTIONEERS  
OF KEARNEY, INC.  
308-234-6266

Robin Marshall Miles Marshall Jeff Marshall  
308-234-1607 308-234-9074 308-233-4633

Office Ph. 308-234-6266 Fax 308-237-7679



[Search our site](#)