

August 27 – Pre-Harvest – Kearney, Nebraska

# MARSHALL'S ABSOLUTE AUCTION

**TUESDAY, AUGUST 27, 2019 – 8:30 A.M.  
KEARNEY, NEBRASKA**

AUCTION SITE: Buffalo County Fairgrounds located from Hwy. 30 and Ave. N (Peavey Grain) 3/4 miles north on Ave. N.

PLAN TO ATTEND THIS ABSOLUTE AUCTION – EVERYTHING SELLS TO THE HIGHEST BIDDER.  
NO MINIMUMS

LIVE ONLINE BIDDING – Advanced registration required.

COME PREPARED FOR TWO AUCTION RINGS

Online Bidding starts at 10:00 AM.

[Register to Bid Online](#)

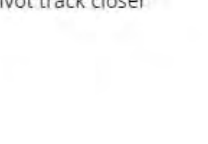
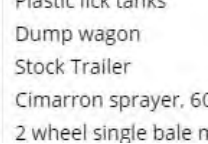
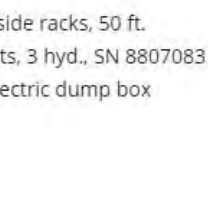
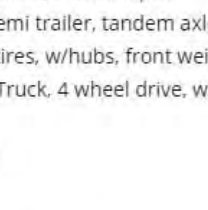
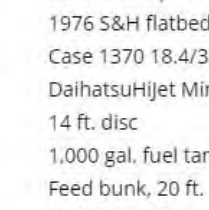
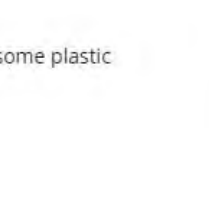
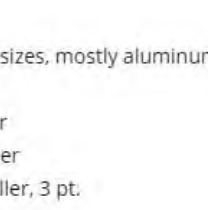
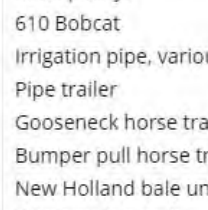
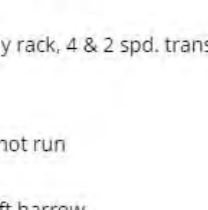
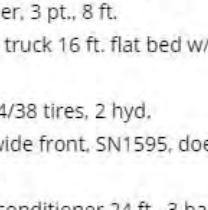
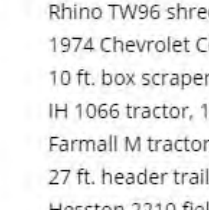
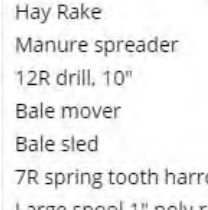
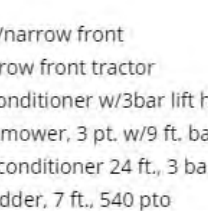
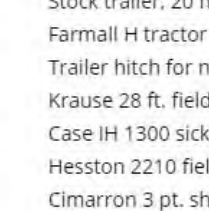
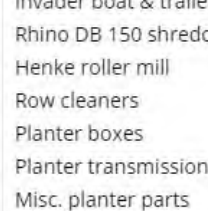
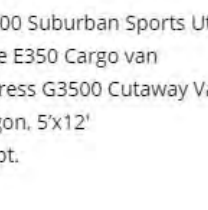
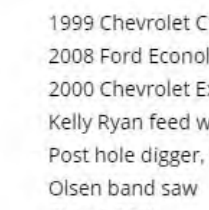
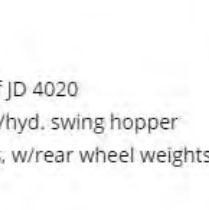
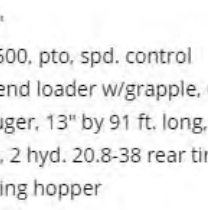
[Online Catalog](#)



“Check in of additional items for August 27, 2019 auction is closed.  
Call soon to consign for the March 2020 Spring auction. Thank you”

## RECENT ADDITIONS





JD 694 corn head, 6r36"  
 Henke Hay Grinder TG600, pto, spd. control  
 EZ on Farmhand front end loader w/grapple, off JD 4020  
 Westfield MK 130-91 auger, 13" by 91 ft. long, w/hyd. swing hopper  
 1973 Case 1070 tractor, 2 hyd. 20.8-38 rear tires, w/rear wheel weights  
 Mayrath 8" auger w/swing hopper  
 300 gal. portable fuel tank  
 Invader boat & trailer  
 Rhino DB 150 shredder  
 Henke roller mill  
 Row cleaners  
 Planter boxes  
 Planter transmission  
 Misc. planter parts  
 Harsh 375H feed wagon  
 Hay Rake  
 Manure spreader  
 12R drill, 10"  
 Bale mover  
 Bale sled  
 7R spring tooth harrow, 8"  
 Large spool 1" poly rope  
 Misc. pulleys  
 610 Bobcat  
 Irrigation pipe, various sizes, mostly aluminum some plastic  
 Pipe trailer  
 Gooseneck horse trailer  
 Bumper pull horse trailer  
 New Holland bale unroller, 3 pt.  
 Windbreak panels  
 Plastic lick tanks  
 Dump wagon  
 Stock Trailer  
 Cimarron sprayer, 60 gal.  
 2 wheel single bale mover, bumper pull

1999 Chevrolet C1500 Suburban Sports Utility Van, 4 door  
 2008 Ford Econoline E350 Cargo van  
 2000 Chevrolet Express G3500 Cutaway Van  
 Kelly Ryan feed wagon, 5'x12'  
 Post hole digger, 3 pt.  
 Olsen band saw  
 Chisel, 28 ft.  
 Stock trailer, 20 ft.  
 Farmall H tractor w/narrow front  
 Trailer hitch for narrow front tractor  
 Krause 28 ft. field conditioner w/3bar lift harrow  
 Case IH 1300 sickle mower, 3 pt. w/9 ft. bar  
 Hesston 2210 field conditioner 24 ft., 3 bar lift harrow  
 Cimarron 3 pt. shredder, 7 ft., 540 pto  
 Apache hay feeder, 2 axles and dolly wheels, 24 ft.  
 Rhino TW96 shredder, 3 pt., 8 ft.  
 1974 Chevrolet C60 truck 16 ft. flat bed w/hay rack, 4 & 2 spd. trans.  
 10 ft. box scraper  
 IH 1066 tractor, 18.4/38 tires, 2 hyd.  
 Farmall M tractor, wide front, SN1595. does not run  
 27 ft. header trailer  
 Hesston 2210 field conditioner 24 ft., 3 bar lift harrow  
 Cimarron 3 pt. shredder, 7 ft., 540 pto  
 1976 S&H flatbed semi trailer, tandem axle, side racks, 50 ft.  
 Case 1370 18.4/38 tires, w/hubs, front weights, 3 hyd., SN 8807083  
 DaihatsuHijet Mini Truck, 4 wheel drive, w/electric dump box  
 14 ft. disc  
 1,000 gal. fuel tank  
 Feed bunk, 20 ft.  
 (2) bale feeders  
 Power harrow for pivot track closer  
 Tool bar  
 375 Seed Tender  
 220 Seed Tender  
 200 Seed Tender

Belt pulley for 8N Ford  
Westfield MK 1300-91 auger  
Grain Fans  
1624 combine tire  
Bison 3 pt. blade  
New Holland small square baler  
JD 535 round baler, twine tie  
2008 Ford F250 Super pickup

Crop Sweeper  
Box Scraper  
8" conveyor

## COMBINE HEADS AND HEADER TRAILERS



Case IH 1666 Axial Flow combine, 3,694 separator hours, 24.5-32 tires, SN JJC015100  
Case IH 2206 corn head, 6r36", plastic snoots, SN 000173  
Case IH 1660 Axial Flow combine w/monitor, SN 03627  
JD 925F Flexhead, 25 ft.  
Case IH 1083 corn head, 8r30"  
Case IH 1020 flex head w/new crop lifters  
IHC 1460 Axial-flow combine, 23.1-26 tires, SN 1700213U06737  
IH 1084 corn head, 8r36", poly snoots, new chain and sprockets last season  
Case IH 984 corn head, 8r36"  
Case IH 1064 corn head, 6r36"  
IHC 964 corn head, 6 r36"  
JD 925F Flexhead w/crary air reel  
JD 25 ft. Hume reel  
JD 4400 combine w/4r corn head  
EZ trail header trailer  
30 ft., 35 ft., 40 ft. header trailers, new  
Homebuilt header trailer, 2 axles

## TRACTORS, LOADERS



1975 Case 1070 tractor w/Dual 3100 loader, 8 ft. bucket, 4 tine grapple, 18.4-38 tires, 2 hyd., 4506 hrs. SN 8783993  
 IHC 1086 tractor w/duals  
 1973 MF 33 wheel loader, 4 wheel drive, crab steering, Perkins diesel engine, 1 yard bucket w/extension, new tires on front  
 IHC 1066 tractor, needs engine work  
 JD 4230 tractor, SN 384025R  
 Leon 808 loader w/6 ft. bucket  
 Westendorf loader w/ 7 ft. bucket & grapple  
 Dual loader w/bucket & grapple  
 Artsway loader w/bucket & brackets for JD 4430 tractor  
 IH M tractor, wide front, power assist steering, belt pully adapter, 3 pt. hitch, w/Dual loader, 7 ft. bucket  
 Model H Farmall tractor, gas  
 10 JD front weights  
 JD tractor seat for sound guard cab

## TRUCKS



1993 Ford semi truck, single axle, Cummins diesel, 10 sp. trans.  
 1979 Chevrolet C-70 truck, 366 big block engine, 5 & 2 spd. trans., 18 ft. Omaha Standard steel sided box w/52" sides & hoist, 9:00-20 Michelin tires, 88,000 miles, sharp  
 1975 IHC Loadstar 1800 truck, tandem twin screw, 5 spd. trans. w/4 spd. rear end, 20 foot steel sided box  
 1975 Chevrolet C65 truck, tandem tag axle, w/20ft. Omaha steel sided box w/52" sides and hoist  
 1975 Chevrolet C60 truck, tag axle, gas, w/20 ft. Midwest steel box & hoist  
 1974 Ford LN 9000 truck, Detroit diesel, 13 spd., twin screw, w/20 ft. steel box & hoist  
 1971 Chevrolet 2 ton truck, 16 ft. steel box & hoist  
 1969 Chevrolet straight truck, gas  
 1964 Chevrolet 2 ton truck w/15 ft. box  
 1976 Ford F600 truck, no side racks, w/hoist

## VEHICLES



2010 Ford E450 Cutaway bus, 6.8L V10 SOHC 20V gas engine, power steering, power brakes, 12 passenger w/2 wheelchairs, Braun wheelchair lift, 103,654 miles, brakes need work, VIN 1FDFF4FS6ADA62987  
 2010 Ford E450 Cutaway bus, 6.8L V10 SOHC 20V gas engine, power steering, power brakes, 12 passenger w/2 wheelchairs, Braun wheelchair lift, 147,002 miles, VIN 1FDFF4FS7ADA46524

## TRAILERS



2013 Neville Built steel single hopper bottom trailer, 27 ft., w/2 axles

2005 Titan 28 ft. trailer, 24 ft. of wooden deck w/4ft. steel dovetail, tandem axle, electric brakes, double jack stands

2004 Titan 24 ft. stock trailer, 2 center gates

1994 Travelute gooseneck stock trailer, 6 ft. 8" by 20 ft.

1989 Merritt hopper bottom trailer, 42 ft. w/roll over tarp

1987 Wilson 48 ft. cattle pot trailer

HK bumper pull stock trailer, 16 ft.

Pickup box trailer

4-wheel trailer w/box

Small utility trailer

## MACHINERY



JD MaxEmerg2 planter, 8r30"

Lilliston cultivator 8r30", set up to seed cover crops

JD 515 30 ft. grain drill, 10" spacing, dual rate seeder, double disc openers, V wheels, hyd. fold

Hiniker 1700 Stalk shredder, 20 ft., large PTO

IHC 12 ft. chisel, 3 pt.

JD 21 ft. disc, manual fold

JD 13 ft. disc

Hutchins 14 ft. off set disc

JD rotary hoe, pull type, 14 ft.

Lely-Roterra RH 450-40, 15 ft., PTO

Lilliston cultivator, 6r36"

JD planter 6r36", w/set of corn and soybean planter boxes

Brady 2166 stalk shredder

IHC disc, 18 ft.

Chisel, 14 ft.

Cultivator, 6r

Field cultivator, 18 ft.

JD disc, 16 ft.

Loftness 216BS flail shredder, 18 ft., 3 pt., 4" cup knives

JD 5 bottom plow

JD roller packer, 10 ft.

McCormick Deering 10 1/2 ft. steel wheeled drill

3 blade under cutter

Brillion 12 ft. alfalfa seeder, 3 pt.

3 pt. field corrugator, 18 ft.

3 pt. anhydrous chisel applicator, 22 ft.  
10 ft. chisel w/hyd. cylinder

## EQUIPMENT



Dual 600 manure spreader, single beater, 1,000 pto, good tires  
David Bradley steel flare box wagon  
JD MX10 shredder, 10 ft., 3 pt.  
Shredder, 7 ft.  
Schaben 25 gal. PT sprayer w/booms  
Gnuse hyd. 3rd length  
Heavy Duty road drag w/hyd. lift, 10 ft.  
FIMCO spot sprayer, 15 gal.  
FIMCO trailer sprayer w/boom, 15 gal.  
Antenna tower, galvanized, 24 ft.  
Bush Hog steel wagon, 7 1/2 ft by 12 ft., w/hoist  
JD Manure spreader, hydro push, needs work  
Detroit 8V92 engine, diesel w/Allison 4 spd. trans.  
Rockwell axle  
Double axle transfer fertilizer trailer w/Honda motor & pump  
Lincoln 225 amp welder  
American Industrial 2 stage up right air compressor, 220 volt  
Soilmover dirt scrapper, 5 yards  
Bush Hog 10 ft. disc, 3 pt.  
Patriot 300 gal. helicopter tanks w/JD8130 mounting brackets  
2017 Danuser 3 pt. pto post hole digger, 12" auger  
Century 1,000 X Fold Boom, 60 ft., pull type  
Several 3 pt. blades, new  
Box scraper, new  
10 ft. & 12 ft. tilt box scrapers, new  
12 ft. pull type grader, new  
Rhino shredder, 7 ft., 3 pt.  
8 ft. 3 pt. blade  
9 ft. 3 pt. blade

JD manure spreader, pull type  
Pivot track closer  
Duals for 1086 tractor  
(2) Combine rims, one fits JD6620 for 23.1-26 tires  
Bar tread tire - 23.1-26  
JD 3 pt. quick hitch  
500 gal. fuel trailer  
1000 gal. fuel barrel w/ 12v pump  
Worksaver PTO 3 pt. post hole digger  
Wooden box wagon & hoist  
500 gal. propane tank  
JD row crop head, 3R30", needs work  
Small dirt machine  
Two wheel garden trailer, 4.5 ft x 2.5 ft.  
Antique 2 bottom plow  
Several polyethylene storage tanks, 100 gal. to 1500 gal., new  
Heavy gauge corrugated scrap metal  
JD 120 lawn mower, 48" deck  
Radial arm saw 10"  
Table saw  
Commercial belt sander  
2 belt sanders  
Table top skill saw  
Stall mats  
Miller 225 portable generator  
2 Antique gas pumps, one w/globe

## SKID STEER ATTACHMENTS



### All of these items are unused

Skid steer pallet forks, 48"

Skid steer loader tree shear attachment

Lowe hyd. auger 750 w/ 12" auger, skid steer quick attach

Stout Brush Grapple 66-9 w/skid steer quick attach

Stout Brush Grapple HD 72-8 w/skid steer quick attach

Stout Brush Grapple HD 72-4 close-tine w/skid steer quick attach

Stout Brush Grapple XHD 84-6 w/skid steer quick attach

Stout Grapple Bucket HD72-FB w/skid steer quick attach

Stout Rock Bucket/Brush Grapple combo HD72-3 open-end w/skid steer quick attach

## GRAIN HANDLING EQUIPMENT



Parker 739 auger wagon, 520/85R38 tires, adjustable axle, large 1000 pto

Westfield WR 100-51 auger, 10" by 51 ft. long w/ 25 hp 240V electric motor and long cord

Feterl 72 ft. PTO auger, 8"

JD 500 auger wagon w/tarp

Rayne auger wagon, 250/300 bu.

Hutchinson auger, 8"

Hutchinson paddle chain drag auger, 14" by 90 ft. long, w/50 hp 3 phase motor

Mayrath pto auger, 13" by 82 ft. long, w/swing hopper

Wheatheart 13" auger, hyd. swing hopper, 81 ft. w/remote

Speed King 57 ft. auger 8", reflighted

Westfield MK 100-61 auger, 10" by 61 ft. long, w/swing hopper

Batco 2500 pit stop drive-over conveyor

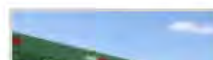
Par-Kan weigh wagon, w/Weigh Tronix scale, & 18 hp gas motor

Ficklin CA9600 grain cart, 475 bu.

Kongskilde cushion air 700 grain vac w/pipe

Grain cleaner

## HAY EQUIPMENT





NH 1475 Hydro swing swather, 14 ft.  
 Case IH 8370 Hydro swing swather, 1 sickle, new hyd. pump, 15 ft.  
 Hesston 30 Stack Hand hay stacker  
 Gehl 1865 baler, used it last year  
 Hay stack mover  
 Ford 552 Round baler  
 Besler gooseneck hay trailer, 12 bales, self dumping  
 Single bale trailer, heavy duty, w/wench  
 Waco 3 pt. double bale mover  
 (2) single bale carriers

## LIVESTOCK EQUIPMENT



Hay feeding wagon, new  
 Silage feeding wagon, new  
 Henke bale processor  
 (2) Speed King portable calf creep feeders  
 Patriot 150-D creep feeder  
 (32) Winke 12 ft. panels & panel trailer  
 Stroberg portable loading chute w/12 ft. panels  
 20 steel cattle panels, 10 ft.  
 Safety calf catching pen  
 L&H portable calf creep feeder  
 8 bottomless steel feed bunks, 20 ft.  
 3 Werkmeister portable 150 bu. creep feeders, w/panels  
 Powder River squeeze chute  
 Calf cradle squeeze chute  
 (2) 10 ft. calf alleyways  
 H&S bale or silage feeder trailer, 24 ft.  
 Feed-R-Wagon 5'x12' w/flared out rear top  
 Powder River calf squeeze chute  
 Cattle squeeze chute  
 Round bale feeder  
 70 steel free standing cattle panels, 24 ft. long by 68" tall, some w/gates  
 22 Behlin steel corn crib panels, 12 ft. long  
 15 Behlin steel corn crib panels, 5 ft. long  
 32 steel free standing cattle panels, 24 ft. by 5 ft. tall, new  
 140 steel continuous fence panels, 6 bar by 20 ft., includes bag of clips, new  
 40 steel portable corral panels, 5 ft. by 12 ft., new  
 20 Baasch steel cattle panels  
 Big Valley steel cattle panels  
 Big Valley steel gates



46 Behlen 12 ft. portable cattle panels, 6 bar  
16 ft. stock panel  
4 wire mesh cattle panels, 4 ft. by 16 ft.  
Limestone posts  
Wooden fence posts  
Numerous cattle water stock tanks, various sizes, New  
6 horse tanks  
Grain feeders  
Cattle oiler  
Pickup stock rack  
Misc. steel electric and T posts

## IRRIGATION

Berkley 3 by 4 pto pump  
2 steel discharge pipes w/flow meters, 8"

## ATV'S AND RECREATIONAL VEHICLES



1985 Rawhide 33 ft. 5th wheel camper, AC/heat, electric or LP refrigerator, electric stove, queen size bed  
2012 Polaris 800 w/full cab and winch, recently serviced  
Envador boat w/Johnson outboard motor  
Invader 18 ft. boat w/Johnson 115 outboard motor  
Old boat (no title) needs engine work, w/tandem trailer

All items must be removed by Sept. 3. Any item left after Sept. 3 will have a \$50 per day rental charge per item due to the Buffalo County Fairground.  
Loading after August 30 by appointment 308-233-4633 or 308-234-6266. No loading on Sunday Sept. 1.

## TERMS

Payment in full day of auction by cash or approved check. I.D. required. \$25 title transfer fee applied to titled vehicles. Everything sells "as is" condition – no warranties. Not responsible for accidents.

LUNCH – By Nelson Camp Stove

CONDUCTED BY

MARSHALL

LAND BROKERS & AUCTIONEERS

OF KEARNEY, INC.

308-234-6266

Robin Marshall Miles Marshall Jeff Marshall

308-234-1607 308-234-9074 308-233-4633

Office Ph. 308-234-6266 Fax 308-237-7679



Search our site