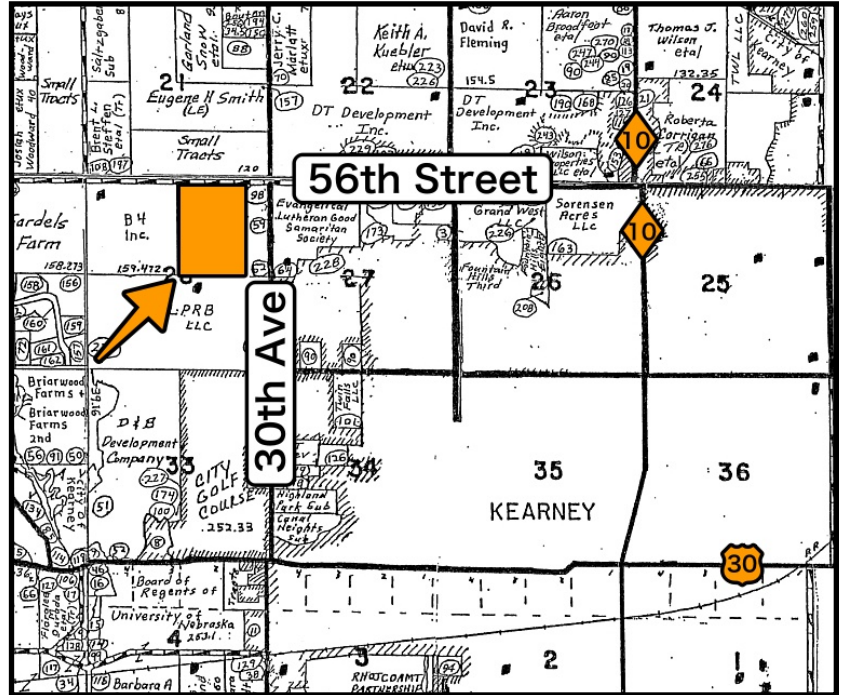


MARSHALL
LAND BROKERS & AUCTIONEERS
2033 Central Ave. - Kearney, NE
Office 308-234-6266

BUFFALO COUNTY, NE

LAND FOR SALE



Price Reduced
\$7,900/Acre

56TH STREET FRONTAGE

PRIME DEVELOPMENT POTENTIAL

See all photos and maps at
marshallauction.com

Your Farm and Ranch Specialists

Location: West edge of Kearney, NE
Legal Description: Part of the Northeast Quarter of Section 28, Township 9 North, Range 16 West of the 6th P.M., Buffalo County, Nebraska
About the Land: Prime development potential - exceptionally well located just northwest of Lighthouse Point subdivision. Frontage on 56th Street. 100 Acres, more or less, currently grassland.
Zoning: Agricultural
2019 Taxes: \$ 2,292.70
Price and Terms: \$ 8,950 per acre. Reduced to \$ 7,900 per acre. 10% Earnest money payment upon signing purchase agreement. The remainder due upon closing.

Office 308-234-6266
Miles Marshall | Broker
Cell 308-233-4384
Luke Huddleston | Associate
Cell 308-293-7258



100
Acres
±

56th Street

Lighthouse
Point
Subdivision

30th Ave

Price Reduced
\$7,900/Acre

MARSHALL
LAND BROKERS & AUCTIONEERS
2033 Central Ave. - Kearney, NE
Office 308-234-6266