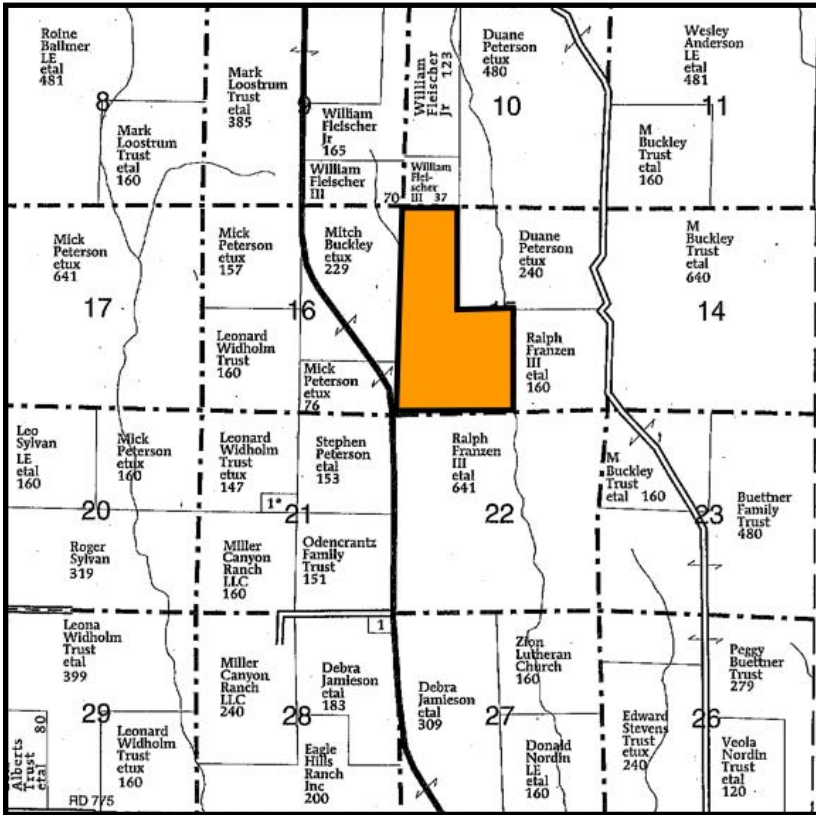


MARSHALL
LAND BROKERS & AUCTIONEERS
2033 Central Ave. - Kearney, NE
Office 308-234-6266

CUSTER COUNTY, NE

LAND FOR SALE

240 Acres ±



Property Adjoins Buckley Farm
Listed by Marshall Land Brokers & Auctioneers
See 228.6 Acres For Sale in Custer County

Location: From Gothenburg, 10.5 miles north on Highway 47.

Legal Description: The Southwest Quarter and the West Half of the Northwest Quarter of, Section 15, Township 13 North, Range 25 West of the 6th P.M., Custer County, Nebraska.

About the Property: 240 Acres, more or less, according to Custer County Assessor records. Property consists of grassland with natural habitat/wildlife.

2019 Taxes: \$ 2,429.24

Price and Terms: \$330,000. 10% earnest money payment upon signing purchase agreement. Possession upon closing.

Your Farm & Ranch Specialists

Office 308-234-6266

Miles Marshall | Broker

Cell 308-234-6266

Luke Huddleston | Associate

Cell 308-293-7258