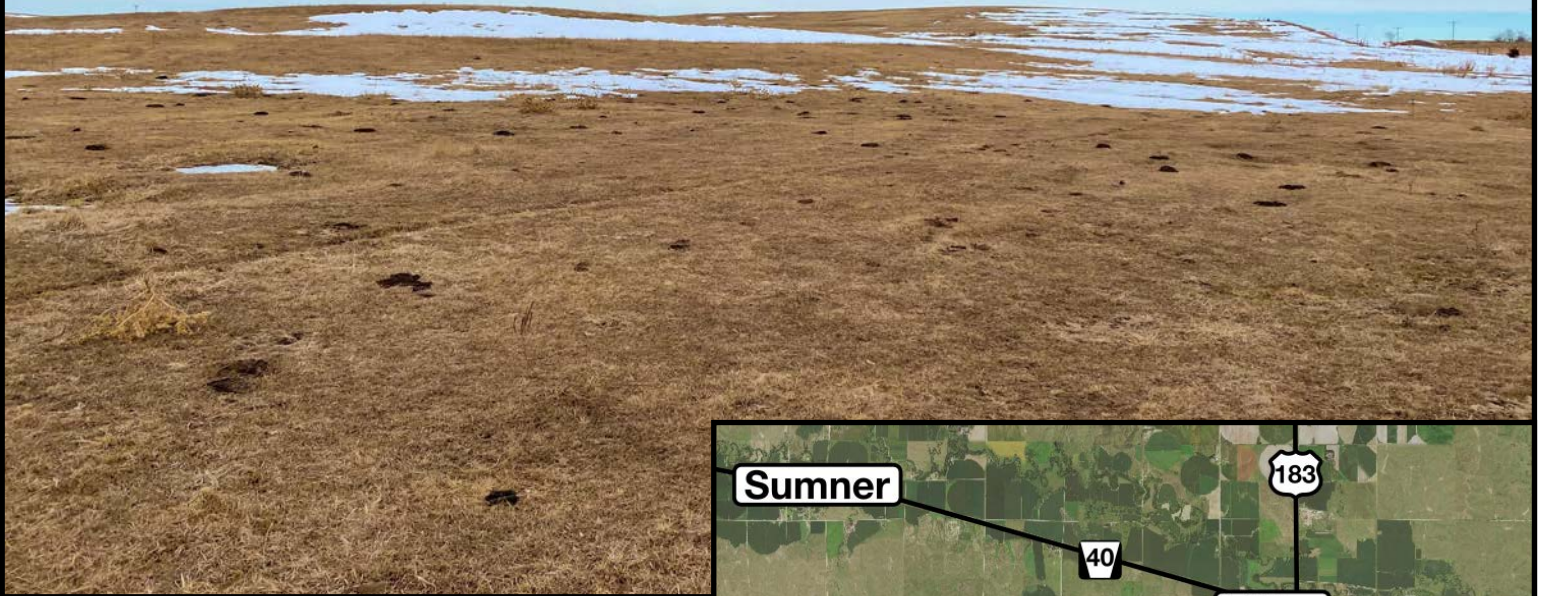


**MARSHALL**  
LAND BROKERS & AUCTIONEERS  
2033 Central Ave. - Kearney, NE  
Office 308-234-6266

BUFFALO COUNTY, NE

**LAND FOR SALE**

# 295.2 Acres ± Pastureland



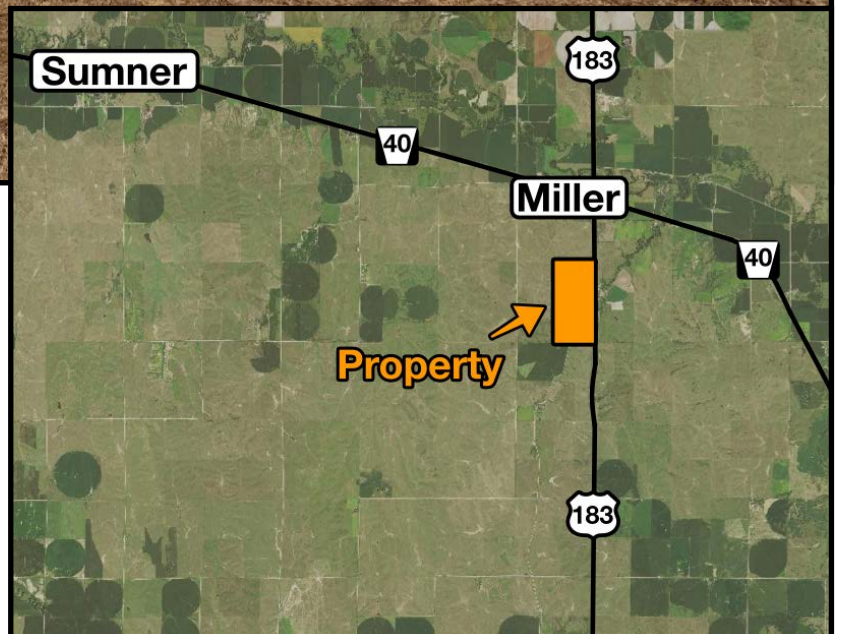
**Location:** From Miller, Nebraska, 3/4 mile south on Highway 183.

**Legal Description:** Part of East Half of Section 20, Township 11 North, Range 18 West of the 6th P.M., Buffalo County, Nebraska.

**About the Land:** 295.21 Acres, more or less, according to Buffalo County Assessor's records. Exceptionally well located grassland with electric submersible well, 3 dams, corrals and highway access. **An excellent unit — well located along US Highway 183!**

**2019 Taxes:** \$ 4,963.50

**Price and Terms:** \$ 510,000, 10% earnest money payment upon signing purchase agreement, the remainder due at closing. Full possession available.



**Office 308-234-6266**

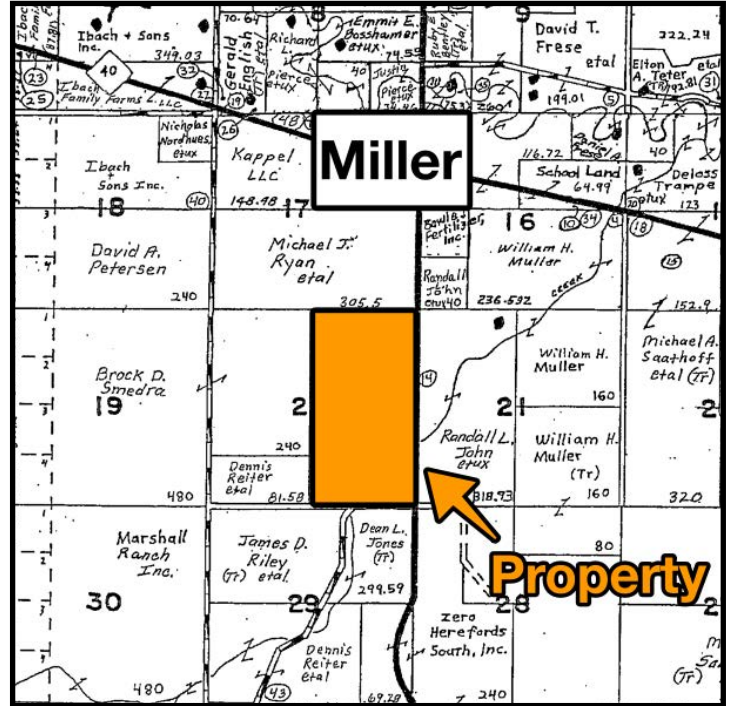
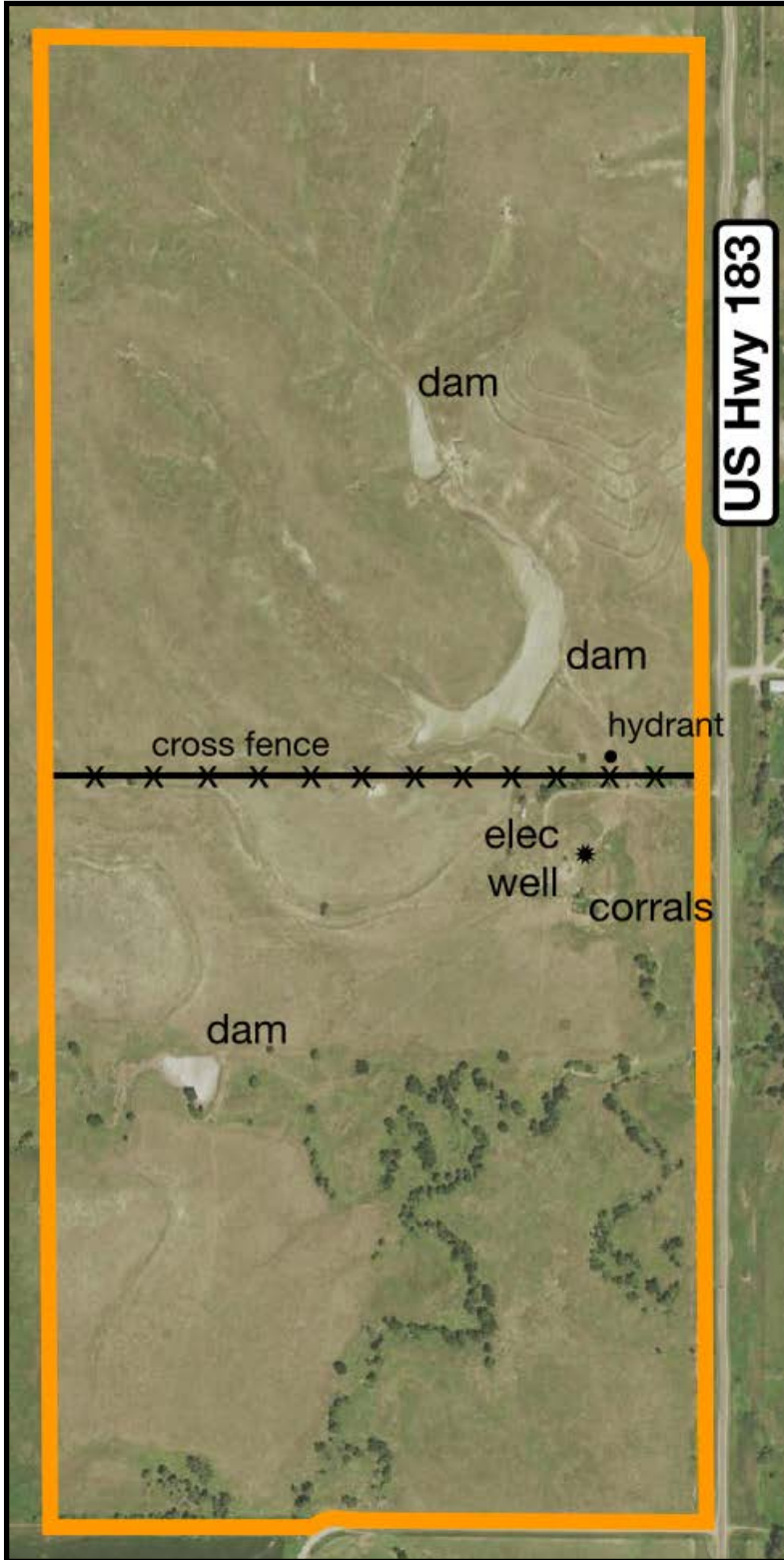
**Miles Marshall | Broker**

Cell 308-233-4384

**Luke Huddleston | Associate**

Cell 308-293-7258

Your Farm and Ranch Specialists



Maps are for illustrative purposes only — not intended to represent actual property lines.



**MARSHALL**  
LAND BROKERS & AUCTIONEERS  
2033 Central Ave. - Kearney, NE  
Office 308-234-6266