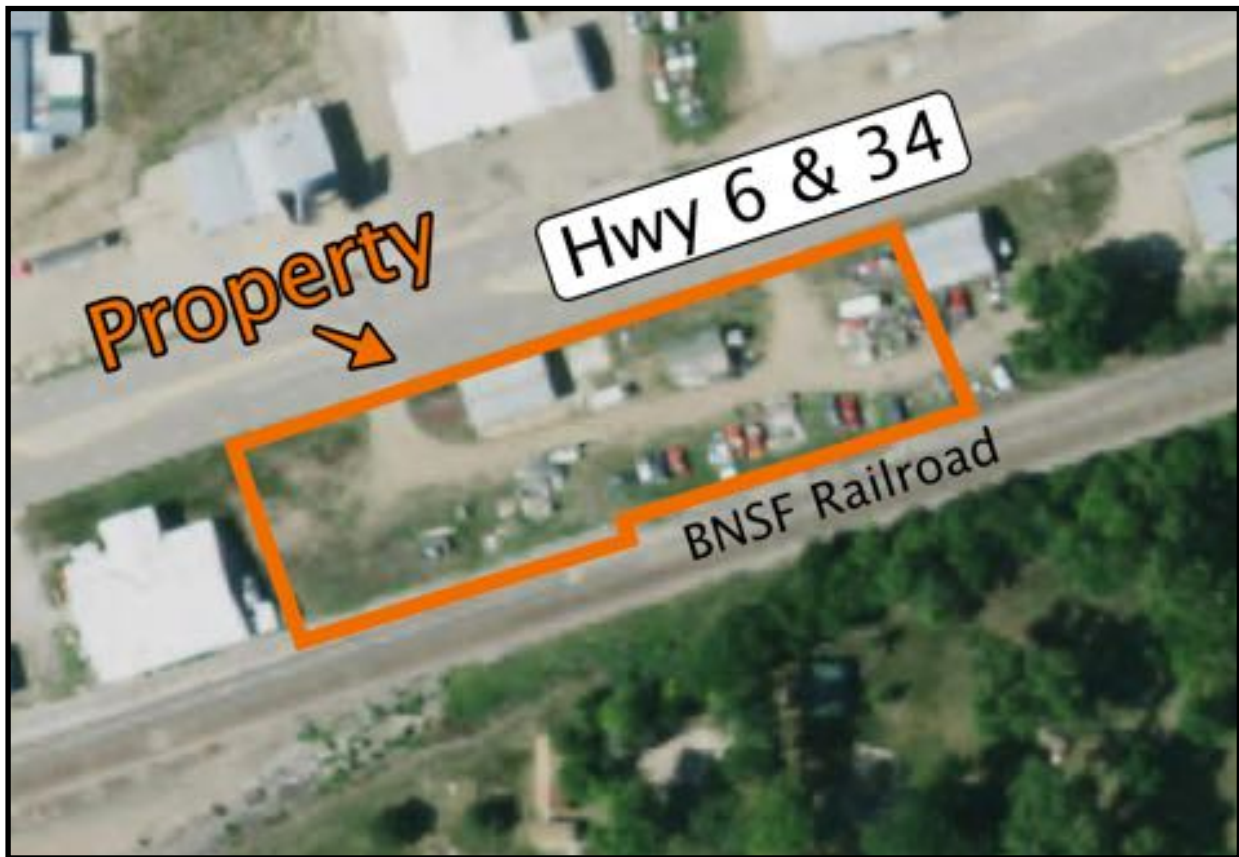


MARSHALL
LAND BROKERS & AUCTIONEERS
2033 Central Ave. - Kearney, NE
Office 308-234-6266

MINDEN, NEBRASKA

PROPERTY FOR SALE

Well Located Property / Railroad Access



Maps are for illustrative purposes only — not intended to represent actual property lines.

Location: From the intersection of Highway 10 and Highway 6 & 34 in Minden, 3 blocks east

About the Land: A unique opportunity - leasehold interest in well located property with railroad siding and also frontage on Highway 6 & 34. Includes several older structures, a submersible well and two driveways providing excellent access off Highway 6 & 34.

2020 Taxes: \$565.44

Price: \$ 35,000

marshallauction.com

Your Farm & Ranch Specialists

Office 308-234-6266

Miles Marshall | Broker

Cell 308-233-4384

Luke Huddleston | Associate

Cell 308-293-7258