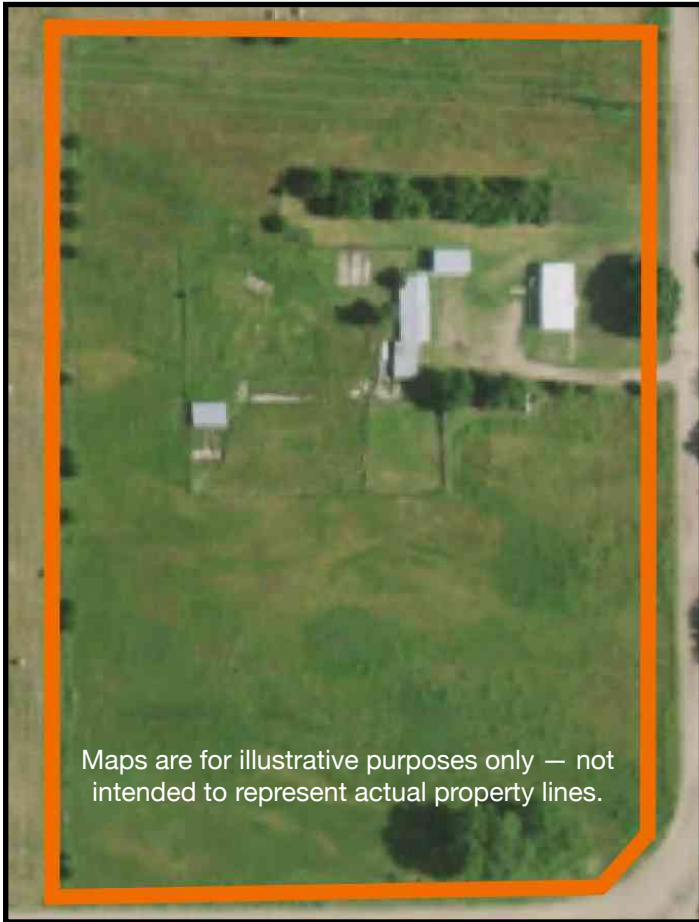


MARSHALL
LAND BROKERS & AUCTIONEERS
2033 Central Ave. - Kearney, NE
Office 308-234-6266

KEARNEY, NEBRASKA

Land For Sale



Location: From Kearney High School, 3/4 of a mile south on 30th Ave.

Legal Description: A tract in the south part of Lot 5, Section 9, Township 8 North, Range 16 West of the 6th P.M., Buffalo County, Nebraska

About the Property: 9.43 Acres, more or less, according to Buffalo County Assessor's records. 3 Bedroom/2 Bathroom manufactured home w/2 car garage, storage building and add'l building. Also includes pastureland. Future potential for mixed-use site.

Zoned: Ag

2020 Taxes: \$ 812.44

Price and Terms: \$295,000 \$245,000
10% earnest money deposit upon signing purchase agreement. The remainder due upon closing.

Price Reduction!



Office 308-234-6266

Miles Marshall | Broker

Cell 308-233-4384

Luke Huddleston | Associate

Cell 308-293-7258

Over 1,000 Properties Sold!