

Farm Machinery Auction

Tuesday - January 24th - 10:30AM
Hastings, Nebraska

[Bid Online Here](#)

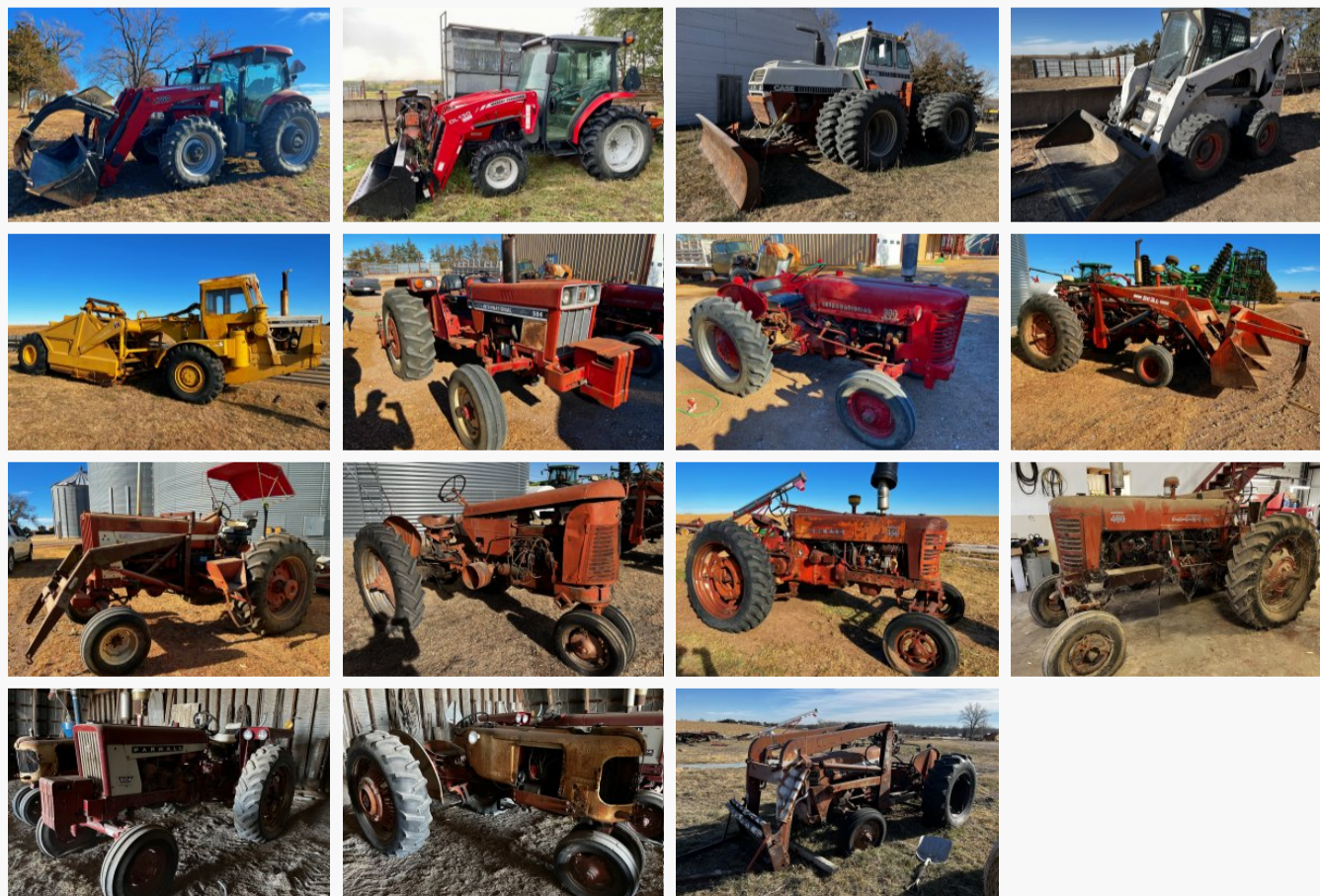
ONLINE BIDDING: Available on major items. Pre-registration required.

Fricke Farms, Inc.
Kathy Fricke, owner
For information on equipment contact Lonnie 402-984-5563

Auction Site: 2280 W. Sundown Rd. Ayr, NE

From the south edge of Hastings, 7 miles south on Highway 281, .5 west on W. Sundown Rd. From Ayr, 2 miles east on Hwy 281, follow the bend north, then 2 miles north on Hwy 281, .5 miles west on W. Sundown Rd.

TRACTORS, SKID STEER & SCRAPER



Case IH Maxxum 140 MFWD Tractor with L760 Loader & Grapple, showing 1,260 hrs., with skid steer quick attach, powershift, 3 hyd., rear wheel weights, 480/80R42 rear tires w/fluid, 380/85R30 front tires

Massey Ferguson 1655 Tractor w/DL130 Loader, showing 293 hrs., shuttle shift

Case 4890 Tractor w/Dozer, 4 hyd., 3pt., 20.8-34 rear and front duals

International 412 Paddle Scraper, 11yd., 400 diesel engine

International 584 Tractor, wide front, front weights, diesel

International 300 Tractor, wide front, gas

Farmall 806 Tractor w/340 Dual Loader/Grapple, diesel, wide front, SN: 33654

Farmall 806 Tractor w/loader bracket, diesel, wide front, cover, SN: 29342

Case VAC Tractor

Farmall 450D Tractor, wide front, diesel, approx. 5,261hrs., SN: 15858

Farmall 450D Tractor, stuck, wide front, SN: 18376

Farmall 400 Tractor, wide front, diesel, SN: 34272

International 504 Tractor, wide front, diesel

Case 350 Tractor, narrow front, gas

International 350 Utility Tractor, w/loader, gas

TRAILERS, TRUCK, & SIDE BY SIDES



International 1600 Loadstar Straight Truck, 16ft. Omaha Standard wood box, grain & cattle gates, single axle

Kubota RTV X1100C Side-By-Side, 282 hrs., diesel, 4X4, tilt bed, pictures coming soon

Kaufman Tilt-Bed Trailer, 22ft., bumper pull

Utility Trailer, 4 wheeler trailer

Titan Stock Trailer, 24ft., gooseneck, tandem axle, 2 gates, slide & swing rear door, manufactured flooring

Diamond D Gooseneck Flatbed Trailer, 24ft., w/ramps, VIN: 1D9F2020XM1121977

Cub Cadet Volunteer Side by Side, diesel, 583 hrs., 4X4, tilt bed

Honda Rubicon 4 Wheeler, 5,896 hrs.

EQUIPMENT & MORE



Lowe L1436L Two Seat Boat w/Trailer

Douglas Mfg. Roto Tiller w/Two international 185 planter units on Orthman bar – will sell as whole unit or separate units

Kuhn TB211 Ditch Mower

New Holland 679 Manure Spreader

BrushCat Front Mower

84" Medium Duty Skid Steer Bucket w/Grapple

EZ-Puller XL-PRO

Badger1 Post Hole Digger

Tree Grapple

Limbsaw Tree Cutter Attachment

(2) US General Tool Cabinets

Kohler Hustler 54" Zero Turn Lawn Mower

(2) Gravity Wagons

1977 T&L 10 Tower Pivot Spans

Electric Hoist, dual wheel hoist, 1,300lb.

Home made fork attachment

Bucket

Dual Loader

Hay Forks for Square Bales

Custom Made silage bucket

(2) 16R30 Hooded Sprayer units

Pipe fittings

10" Gated Aluminum Pipe, 20" spacing, keyhole & dams, approx. 2,160ft.

8" Mainline pipe, approx. 1,740ft.

6" Mainline pipe, approx. 1,440ft.

Pivot Tires

Izuzu Diesel motor, w/pump

Dump Boxes

Pickup Box

Allis Chalmers suitcase weights

Cammond Box Scraper

(2) Pipe Trailers

Paper Cattle Squeeze Chute

Lick Tub for minerals

Misc. Cattle panels

Bale Fork

Grapple for Dual Loader

Cattle Rub

Bucket for Payloader

Assortment of fast hitches

Buckets for Tractors

Mist Blower

Gate for pond

Speed King 6" Auger, approx. 20ft.

6" electric Auger

Crustbuster Springtooth, Single Harrow

Portable Loading Chute

(2) H&S Bale Trailers

Hiller

5 Shank Ripper, 3pt.

Hawkins 8R36 Ridger, 3pt.

IH490 25ft., Disk, w/3 bar harrow

12ft. Krauss Disk, pull-type

3pt. Blade, approx. 8ft.

(2) 3pt. Harrows

Woods Cadet 72" Rotary Mower, 3pt.

Tree Root Rake

6ft. Sickle Mower

10ft. Blade (broken)

4 Bottom International Plow

8ft. Blade

TERMS: Payment in full by cash or approved check day of auction. I.D. required. \$25 title fee on titled vehicles. Everything sells in "as-is" condition – no warranties. Not responsible for accidents.

Lunch Available by Red's Country Catering

Your Professional Auctioneers



Jeff Marshall
308-233-4633



Luke Huddleston
308-293-7258



Miles Marshall
308-234-6266



Clay Patton
719-760-0747



Marshall Land Brokers & Auctioneers
PO Box 261
2033 Central Ave,
Kearney, NE 68847

(308) 234-6266



