



REGISTER / ONLINE BIDDING

# Marshall's Absolute Auction

Tuesday - March 8, 2022 - 9:00AM

Online Begins - 10:30AM

Auction Site: Buffalo County Fairgrounds located from Hwy 30 and Ave N (Peavey Grain) 3/4 miles north on Ave N

**LIVE ONLINE BIDDING: Advanced Registration Required**

Plan to attend this absolute auction – Everything sells to the highest bidder. No Minimums

All items must be removed by March 15. Any item left after March 15 will have a \$50 per day rental charge per item due to the Buffalo County Fairgrounds. Loading after March 11 by appointment only call 308-233-4633 or 308-234-6266. No loading on Sunday March 13.

---

## RECENT CONSIGNMENTS



## PLANTERS & SPRAYER

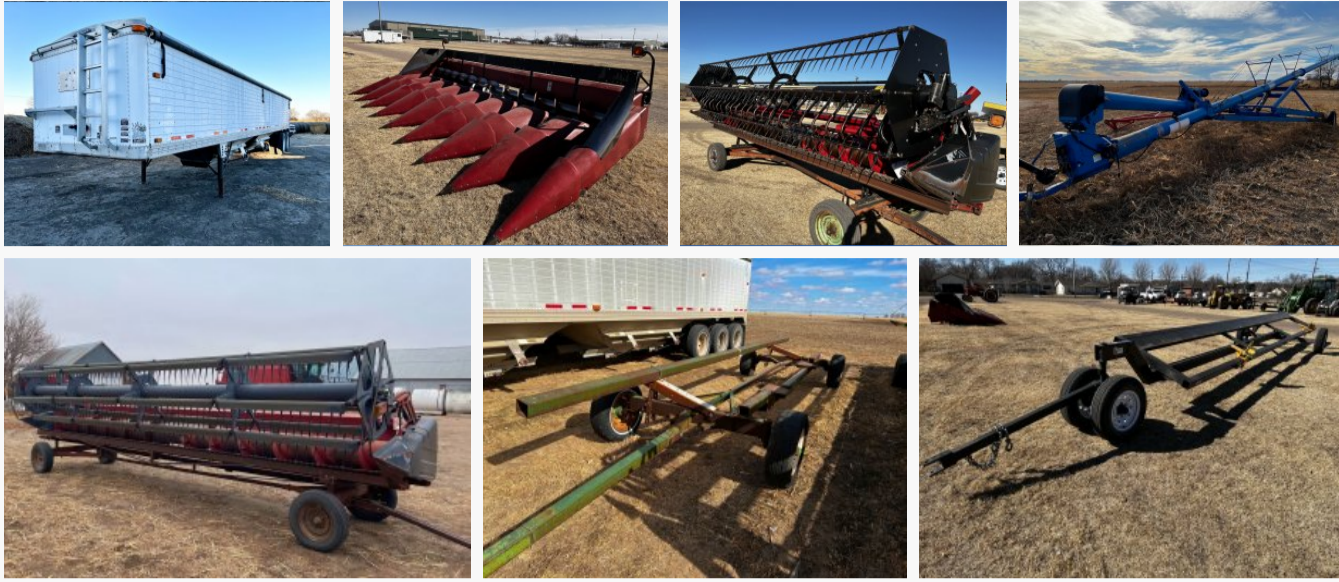


John Deere 1720 CCS 16R30 planter, new in 2012, stack-fold, Yetter floating row cleaners w/depth bands, air down pressure on row units, Thompson closing wheels, liquid fertilizer, nice unit! [\(see spec sheet here...\)](#)

John Deere 1720 16R30 planter, Moore-Built stack-fold, lift assist wheels, Keetons, Schlagel closing wheels, Yetter floating row cleaners w/ dept. bands, air down pressure on row units, liquid fertilizer, [\(see spec sheet here...\)](#)

Raven II guidance monitor, Hypro spray pump, nice unit!

# HARVEST



2000 Timpco 42ft. hopper bottom grain trailer, Shurlok tarp, spring suspension

Casell 1083 8R30 corn head, poly snouts, SN: JJC0337834

Casell 1020 20ft. flex head w/air reel

My-D-Han-D 8"X60' pto auger

B&B Header trailer

Farm King 1041 pto auger

Header trailer for corn head.

Brandt 1070 auger

Casell 1020 25ft. platform

Header trailer

# TRACTORS



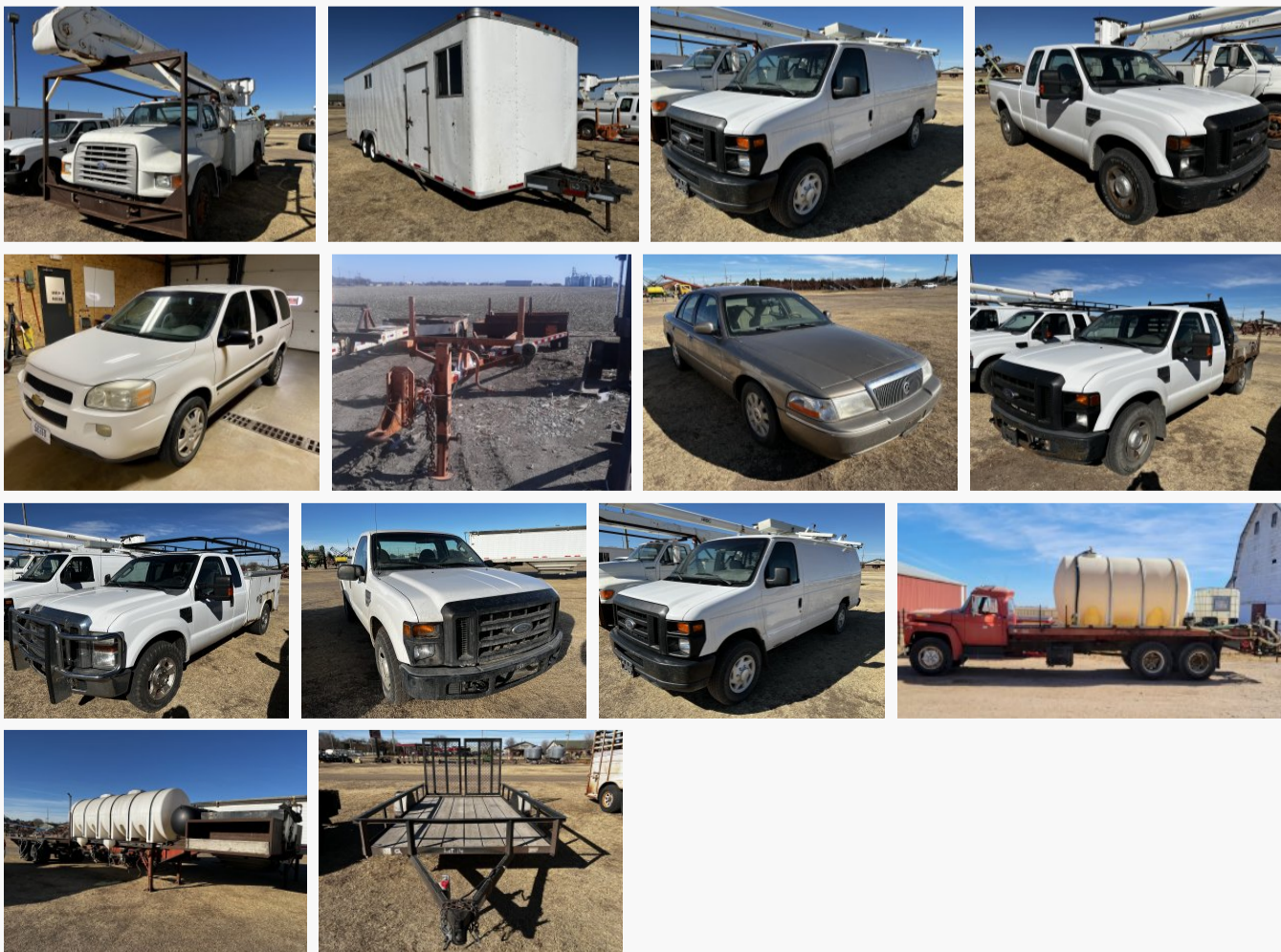
John Deere 4020 with Farmhand w/F258 loader, 18.4-34 tires, bucket & grapple, SN: 1213R178080R

Ford 8N tractor

1953 Farmall Super M, wide front, pto, 14.9-38 tires, SN: 27812J

1947 Farmall H, narrow frt., pto, pulley, 13.6-38 tires, SN: 242658X1

# TRUCKS, VEHICLES, TRAILERS



1969 Ford truck, gas, flatbed w/stock racks & hoist

1995 Ford F800 W/Altec bucket, 48' reach

2003 Mercury Grand Marquis

2008 Ford F250 truck, 4X2, ext. cab, short box

2008 Ford F250, 4X2, reg. cab, long box, (engine burns coolant)

2010 Ford F350, 4X2, ext. cab, 8' utility box, (weak engine)

2011 H&H 8X28 Enclosed Trailer, 5K Axles

1980 Fruehauf semi van trailer

2008 Ford E350 Van

# MACHINERY



Liquid fertilizer injector, 16R30, Yetter coultter units, SureFire shift, hyd. pump, trailer hitch

StripCat 12R30 machine

SoilMover 50RF dirt machine

2006 Vermeer 605M baler, updated rollers, w/monitor, one owner, net & twine wrap

Krause 1900 26ft. disk, harrow

Krause 4900 23.5ft. disk

Sunflower 27ft. field cultivator

B&H 9100 8R30 cultivator/ridger

2,250ft. of alum. irrigation pipe, plus fittings

WilRich 8R30 flopper-chopper, 3pt. hyd. fold

BluJet 6R36 fertilizer applicator, hyd. shutoff

Loftness 6R36 shredder

Hawkins 6R30 hiller

BluJet Coulter Pro tool bar, 20ft.

Krause 4126 28.5ft. field cultivator

BluJet anhydrous applicator w/Dickey John control, hyd. fold

Schaben 60ft. sprayer, 500 gal., Raven controller

30ft. anhydrous applicator

Flex King sweep plow

John Deere 3pt. rotary hoe

Hawkins 6R hiller

(2) John Deere chuck wagons

Krause 1900 21ft. disk

12 – Dozen Big Foot sleeper shell goose decoys

# EQUIPMENT



Soybean seed enoculator, 2 box

Orthman stumper units

Cement mixer

Grain leg parts

John Deere LT 133 riding mower, 38" deck

Truck & implement tires

(12) Yield 360 bandits

John Blue piston pump

300 Gal. front mt. tank

Poly tank

(10) John Deere front wts.

Valmar 1210 AirFlo w/parts, frame for offset

John Deere GreenStar 2 1800 monitorw/manuals

9ft. rolling baskets

Door for 24ft. grain bin

(3) Goodyear Dynatorque 18.4-42 tires

(2) Goodyear 380/85/34 MFWD tires

(2) Goodyear duals, 18.4-42, 10 bolt

(2) 20.8-38 duals, 10 bolt

# LIVESTOCK EQUIPMENT



- (90) 20ft. 6 bar continuous cattle panels
- (9) 20ft. freestanding cattle panels
- (8) 24ft. freestanding cattle panels
- (30) 20ft. portable panels
- Panel trailer
- Heavy duty free standing steel cattle panels, 24ft. by 68" tall
- Diamond D 16ft. gooseneck stock trailer
- (5) new steel silage bunks, smooth sided, legs underneath, 45" wide by 15" deep by 20' long
- (5) new Forever steel bunks, smooth sided, legs underneath, 37" wide by 11" deep by 20' long
- (10) new Forever bottomless bunks, 4' wide by 28" deep by 20' long
- New 250 bu. steer stuffer
- T-posts and elec. posts, wire
- Misc. cattle panels

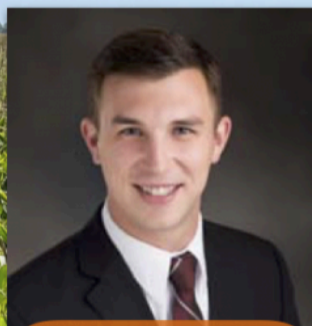
Lunch Available by Nelson Camp Stove

TERMS: Payment in full day of auction by cash or approved check. I.D. required. Everything sells in "as-is" condition – no warranties. \$25 title transfer fee applied to titled vehicles & trailers.

## Your Professional Auctioneers



**Jeff Marshall**  
308-233-4633



**Luke Huddleston**  
308-293-7258



**Miles Marshall**  
308-234-6266



**Clay Patton**  
719-760-0747



Marshall Land Brokers & Auctioneers  
PO Box 261  
2033 Central Ave,  
Kearney, NE 68847

(308) 234-6266

