

MARSHALL

LAND BROKERS & AUCTIONEERS
Office 308-234-6266

BUFFALO COUNTY, NE

LAND FOR SALE

Riverfront Retreat



Beautiful Riverside Retreat on South Loup River

Location: Next to Highway 183 - 8 miles north of Miller (west side of Hwy. 183 - north side of South Loup River)

Legal Description: Part NW1/4 of NW1/4, aka Government Lot 3, lying west of Highway 183 and N. of the South Loup River, in Section 4, Township 12 North, Range 18 West of the 6th P.M., Buffalo County, Nebraska

About the Land: Discover the perfect blend of seclusion and accessibility with this stunning property nestled along the banks of the South Loup River in Central Nebraska. Just north of Miller and conveniently located next to the US Highway 183, this property promises a tranquil retreat with excellent opportunities for recreation and hunting. The property also offers income-generating cropland. Whether you dream of building your ideal home or seeking a getaway retreat, this land, with its natural beauty and potential for development, embodies a rare and enticing opportunity waiting to be seized. Includes approx. 20 acres of newly seeded alfalfa, small cabin, metal storage building and carport.

Price: \$ 449,000.00

10% earnest money deposit upon signing the purchase agreement. The remainder due upon closing.



Luke Huddleston | Associate

Cell 308-293-7258

Miles Marshall | Broker

Cell 308-233-4384



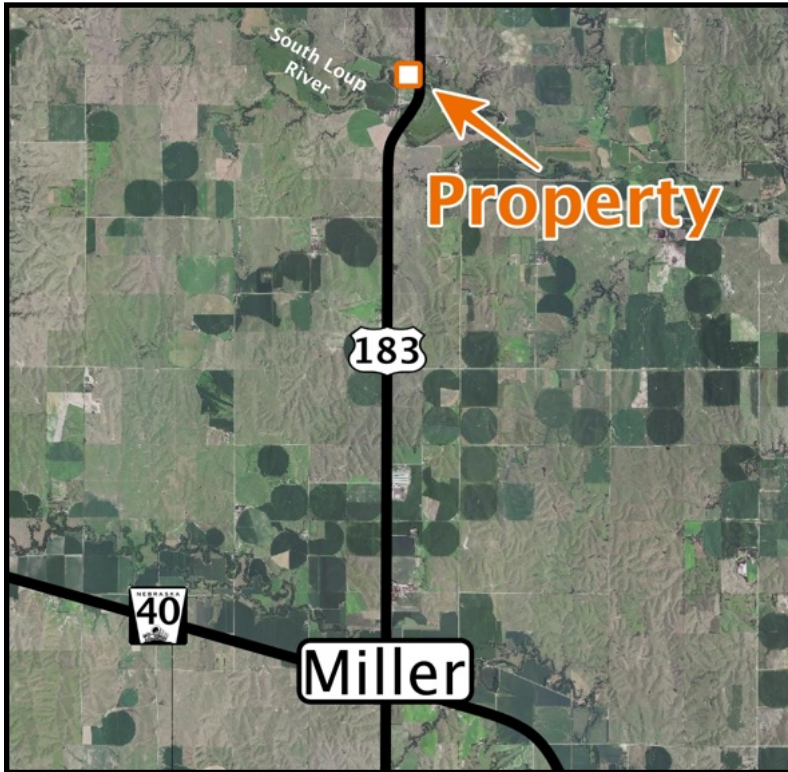
308.234.6266



marshallauction.com



2033 Central Ave
Kearney, Nebraska



Maps are for illustrative purposes only — not intended to represent actual property lines.



MARSHALL
LAND BROKERS & AUCTIONEERS