

FOR SALE **SOLD**

## SOLD – 3.05 ACRES – EXCELLENT LOCATION – BUFFALO COUNTY, NEBRASKA

Excellent Location

Acreage for Building

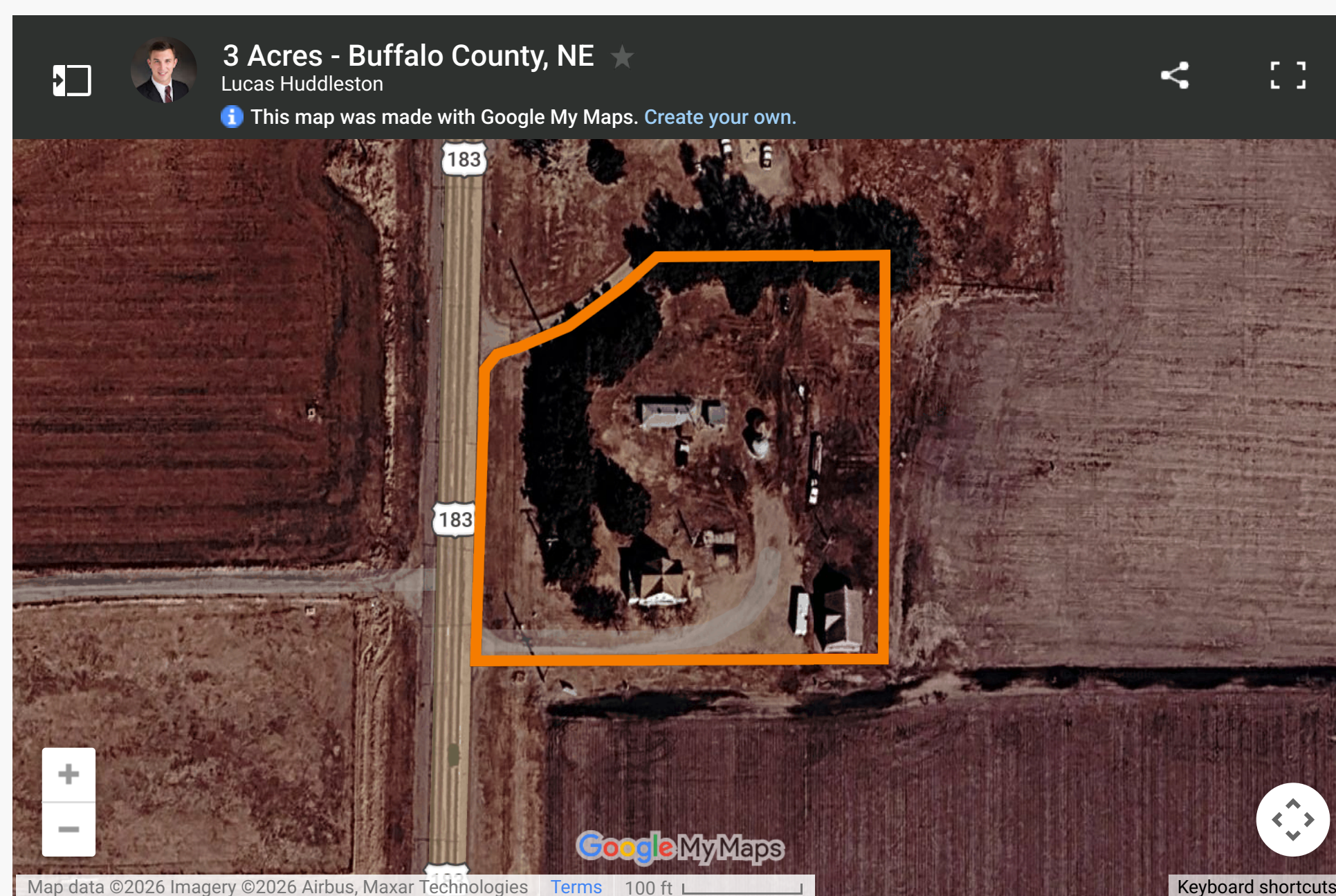
SOLD – \$ 84,900

**Location:** Along US Hwy 183, between Elm Creek and I-80 Exit 257

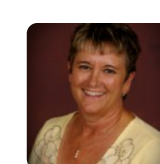
**Legal Description:** SIMMERMAN ACRES LOT 2 (3.05 ACRES) 33-9-18 PT W1/2 SE 1/4- PT T L

**About the Property:** This listing features 3 acres just south of Elm Creek. Perfect for building on a great location! There is a barn, small shed, 2 small grain bins and an older home that is not habitable in its current condition. The property is being sold AS IS, no warranties implied or guaranteed.

**Price:** \$84,900



### Contact Information

[View Listings](#)


Jan Hinrichsen  
308-233-4892

### Enquire About This Property

Name

Phone

Enter your n:

Enter your P

Email

I'm a

Enter your ei

Select

### Message

Hello, I am interested in [SOLD – 3.05 ACRES – EXCELLENT LOCATION – BUFFALO COUNTY, NEBRASKA]

By submitting this form I agree to [Terms of Use](#)

[Request Information](#)