

# MARSHALL

LAND BROKERS & AUCTIONEERS  
Office 308-234-6266

## ELM CREEK, NE

## 335 N. BEECROFT



**2 BED/1 BATH HOME • 2 CAR GARAGE**  
**1,756 SQ. FT. • WELL LOCATED NEAR ELM CREEK SCHOOL**

**Location:** 335 N. Beecroft Elm Creek, NE 68836

**Lot Size:** 7,280 sq. ft., more or less, according to Buffalo County Assessor records

**About the Property:** Charming bungalow located in Elm Creek, Nebraska offering 1,756 total square feet of living space, including 988 square feet on the main floor and 768 square feet in the partially finished basement. The main level features a spacious eat-in kitchen, dining room, comfortable living room, two bedrooms, and a full bathroom. The basement provides additional living space with a family room, non-conforming bedroom, laundry room, and ample storage.

You'll appreciate the home's convenient location with close proximity to the school, park, and community swimming pool.

**2025 Taxes:** Exempt (\$2,427.26 without exemption)

**Price:** \$ 205,000



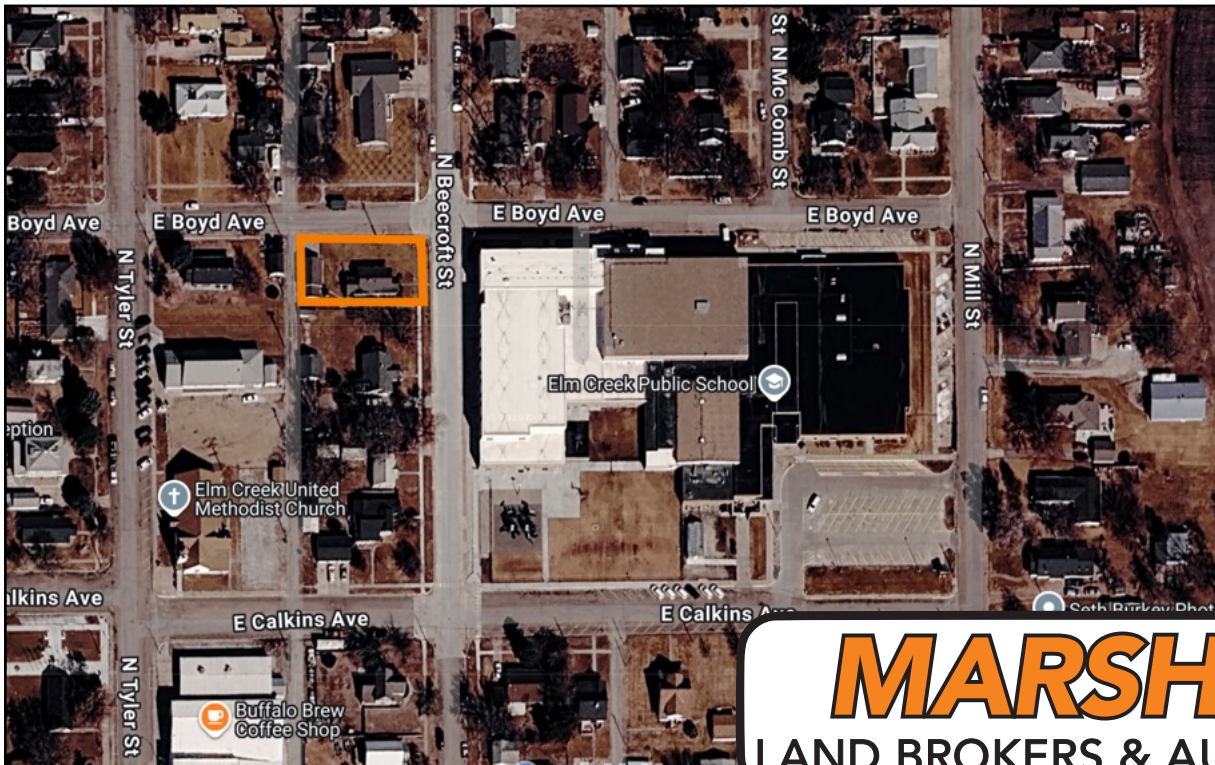
**Jan Hinrichsen | Associate**

Cell 308-233-4892

308.234.6266 [marshallauction.com](http://marshallauction.com)

2033 Central Ave  
Kearney, Nebraska

marshallauction.com



**MARSHALL**  
LAND BROKERS & AUCTIONEERS

marshallauction.com