

MARSHALL

LAND BROKERS & AUCTIONEERS
Office 308-234-6266

ELM CREEK, NE

215 N. MILL STREET



**1 BED/1 BATH HOME • DETACHED GARAGE
640 SQ. FT. • LOCATED IN SOUTHEAST ELM CREEK, NE**

Location: 215 N. Mill St., Elm Creek, NE 68836

Lot Size: 5,175 sq. ft., more or less, according to Buffalo County Assessor records

About the Property: Affordable small-town living in Elm Creek! This property features a 1-bedroom, 1-bath home with main floor laundry, detached garage, and approximately 640 sq. ft. of living space on a 5,175 sq. ft. lot. Conveniently located in southeast Elm Creek near the school and just a short drive to Kearney via Highway 30. Property is offered AS IS at list price.

2025 Taxes: \$1,041.54


Price: \$ 74,900

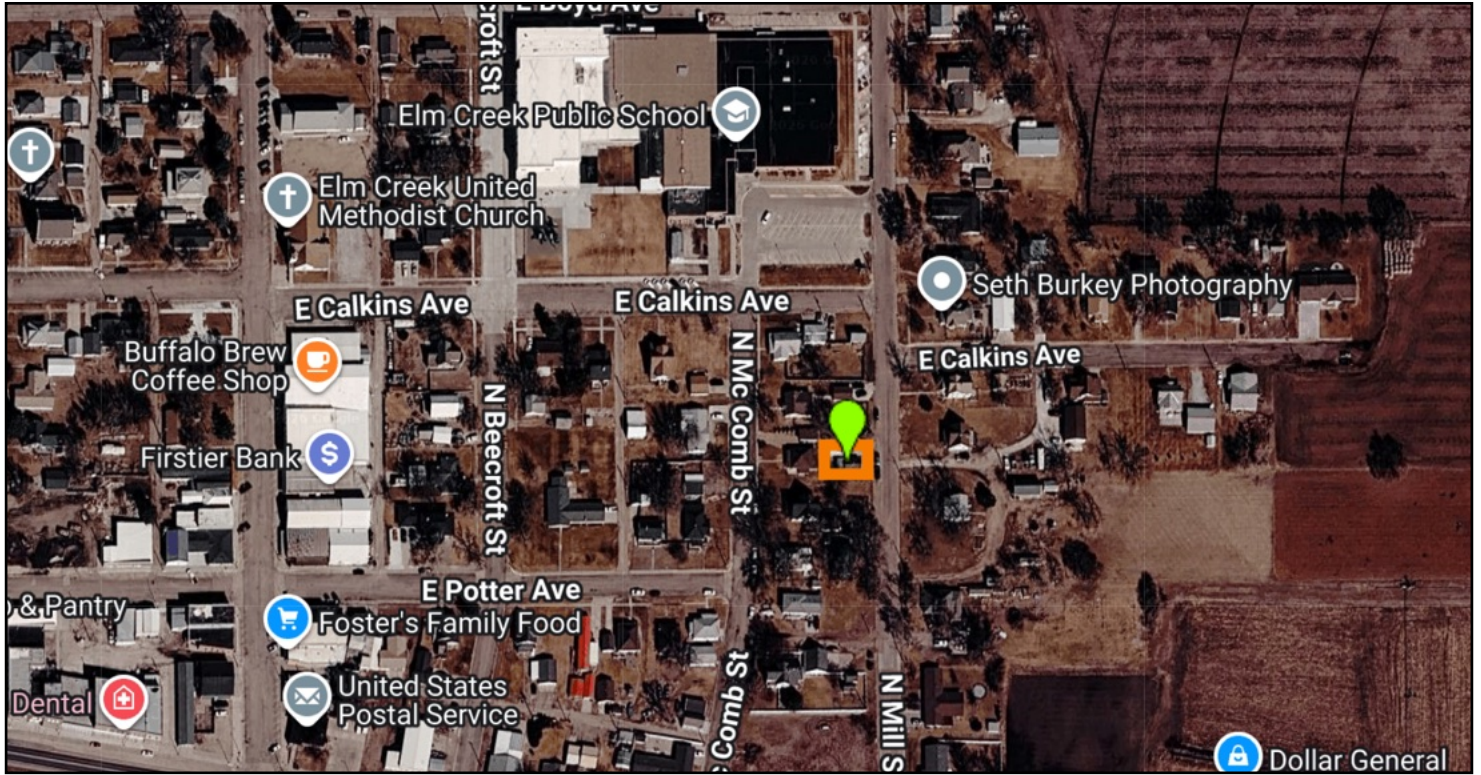


Jan Hinrichsen | Associate

Cell 308-233-4892

 308.234.6266  marshallauction.com

 2033 Central Ave
Kearney, Nebraska



MARSHALL
LAND BROKERS & AUCTIONEERS