

MARSHALL

LAND BROKERS & AUCTIONEERS
Office 308-234-6266

ELM CREEK, NE

325 N. BEECROFT



3 BED/2 BATH HOME • 2 CAR GARAGE

1,685 SQ. FT. • WELL LOCATED NEAR ELM CREEK SCHOOL

Location: 325 N. Beecroft Elm Creek, NE 68836

Lot Size: 14,300 sq. ft., more or less, according to Buffalo County Assessor records

About the Property: 325 N Beecroft features a well-maintained 1½-story home ideally located near the public school and downtown area. The home includes 3 bedrooms, 2 bathrooms, and a finished basement complete with a family room, non-conforming bedroom, and full bath. Additional improvements include a detached 2-car garage, garden shed, underground sprinklers, fenced backyard, and established yard space. Excellent location with convenient access to local amenities.

You are sure to enjoy the home's close proximity to the school, park, and community swimming pool.

2025 Taxes: \$2,939.82

Price: \$ 249,900



Jan Hinrichsen | Associate

Cell 308-233-4892



308.234.6266

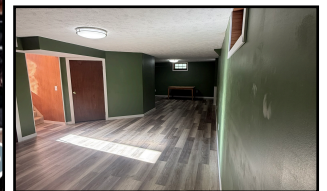
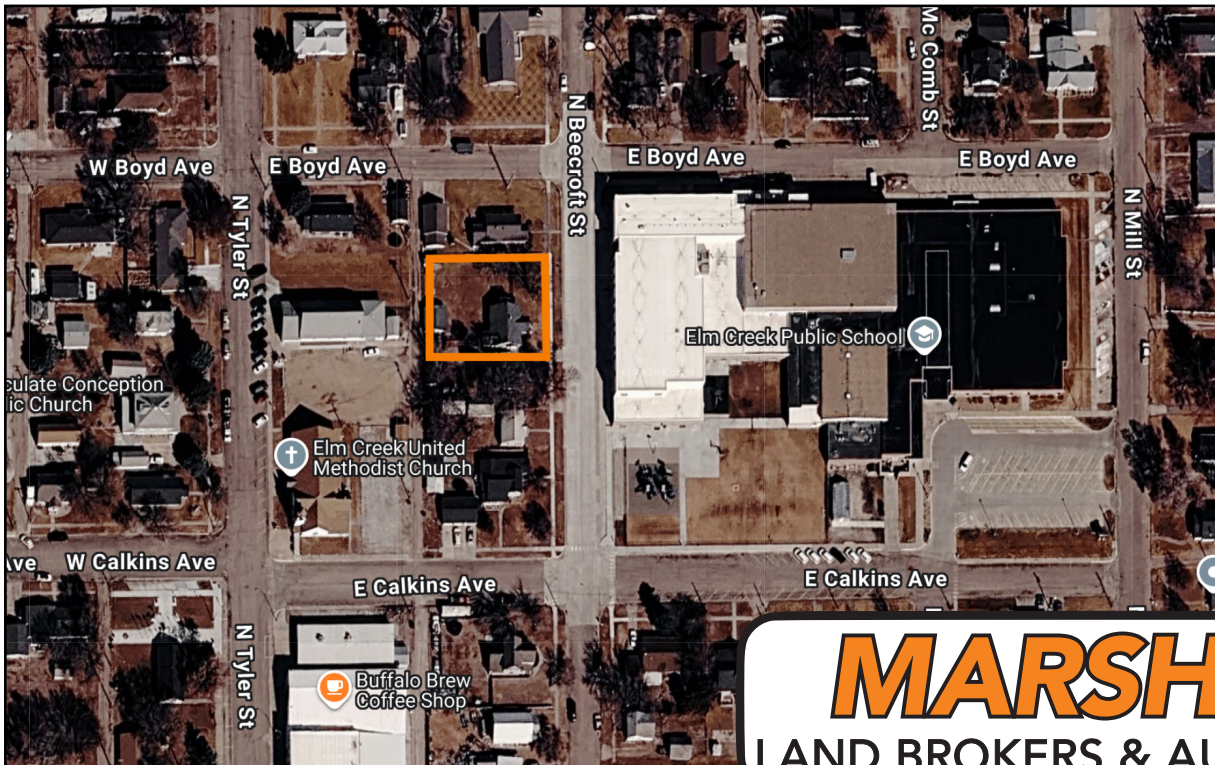


marshallauction.com



2033 Central Ave
Kearney, Nebraska

marshallauktion.com



MARSHALL
LAND BROKERS & AUCTIONEERS

marshallauktion.com